

Pax8-Cre

品系全名	C57BL/6Smoc- <i>Pax8</i> ^{em1(Cre-WPRE-polyA)Smoc}
目录号	NM-KI-200151
品系状态	活体

基因信息

基因名 Pax8	基因曾用名	Pax-8
	NCBI ID	18510
	MGI ID	97492
	Ensembl ID	ENSMUSG00000026976
	人类同源基因	PAX8

品系描述

将Cre-WPRE-polyA插入到小鼠Pax8基因起始密码子处。

应用领域: Cre工具鼠, 肾脏和甲状腺发育等区域

*使用本品系发表的文献需注明: Pax8-Cre mice (Cat. NO. NM-KI-200151) were purchased from Shanghai Model Organisms Center, Inc..

验证数据

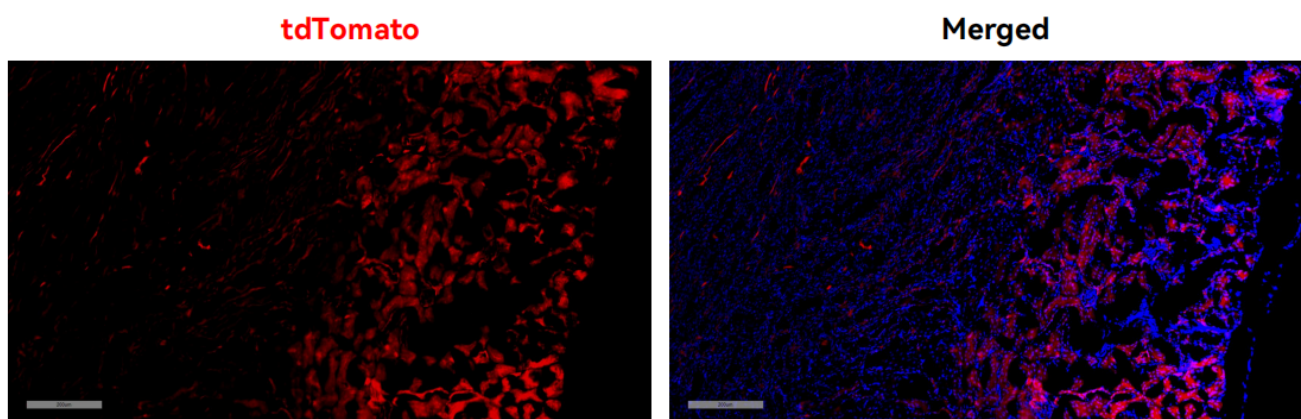


Fig1. Cre-mediated recombination in kidney of Pax8^{Cre/+}; Rosa26^{tdTomato/+} mouse.



Fig2. Cre-mediated recombination in thyroid of Pax8^{Cre/+}; Rosa26^{tdTomato/+} mouse.

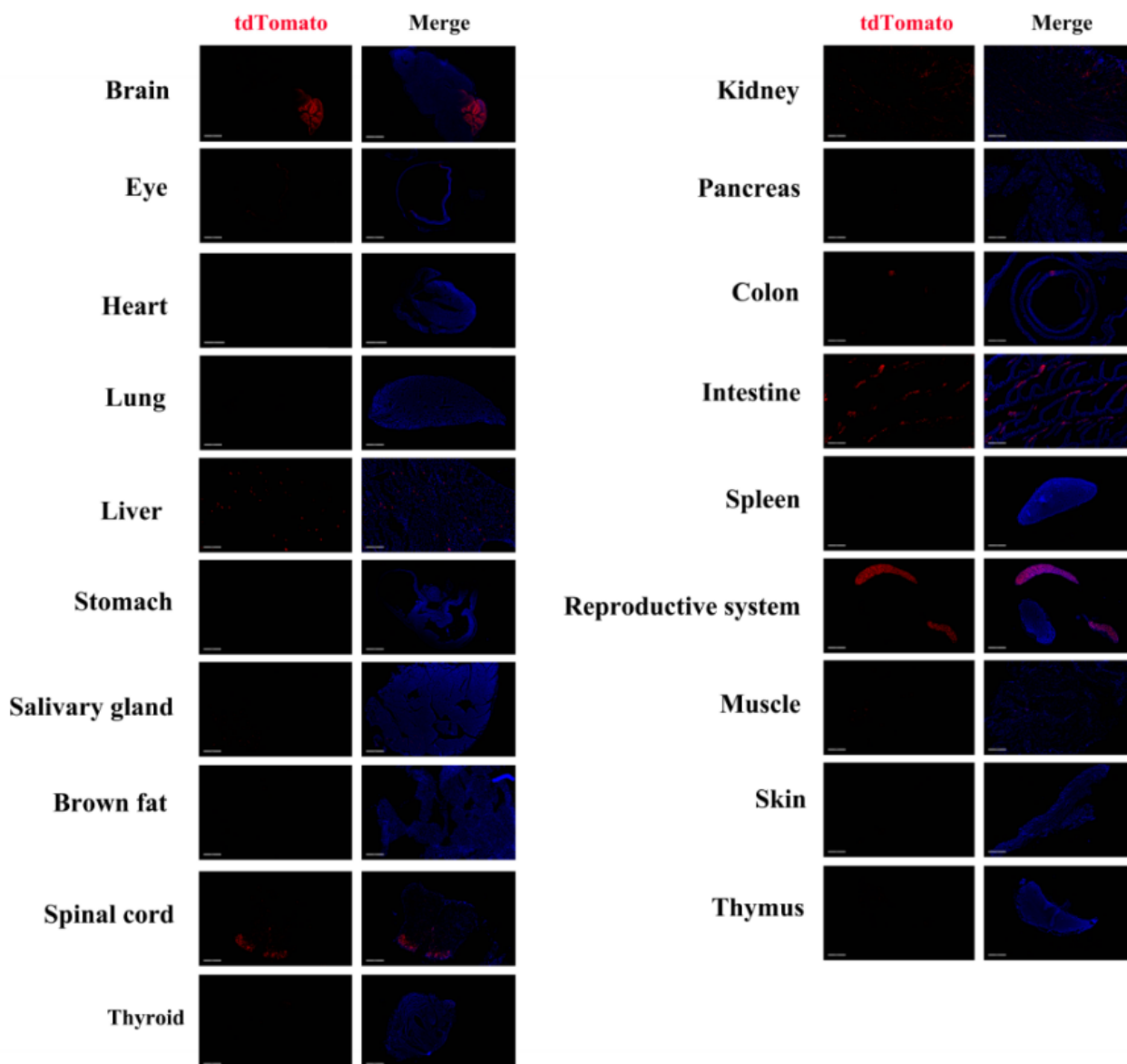


Fig3. Detection of tdTomato (red) in various tissues of Pax8^{Cre/+}; Rosa26^{tdTomato/+} mice. (For more detailed information please contact our technical advisor.)