

# Tagln-CreERT2

品系全名	C57BL/6Smoc- <i>Tagln</i> <sup>em(CreERT2)1Smoc</sup>
目录号	NM-KI-225006
品系状态	精子冻存

## 基因信息

基因名	基因曾用名	Sm22, Sm22a, Ws310
	NCBI ID	<a href="#">21345</a>
	MGI ID	<a href="#">106012</a>
	Ensembl ID	<a href="#">ENSMUSG00000032085</a>
	基因标记细胞类型举例	血管平滑肌细胞
	人类同源基因	TAGLN

## 品系描述

将CreERT2插入到小鼠Tagln基因起始密码子处。

\*使用本品系发表的文献需注明: Tagln-CreERT2 mice (Cat. NO. NM-KI-225006) were purchased from Shanghai Model Organisms Center, Inc..

## 验证数据

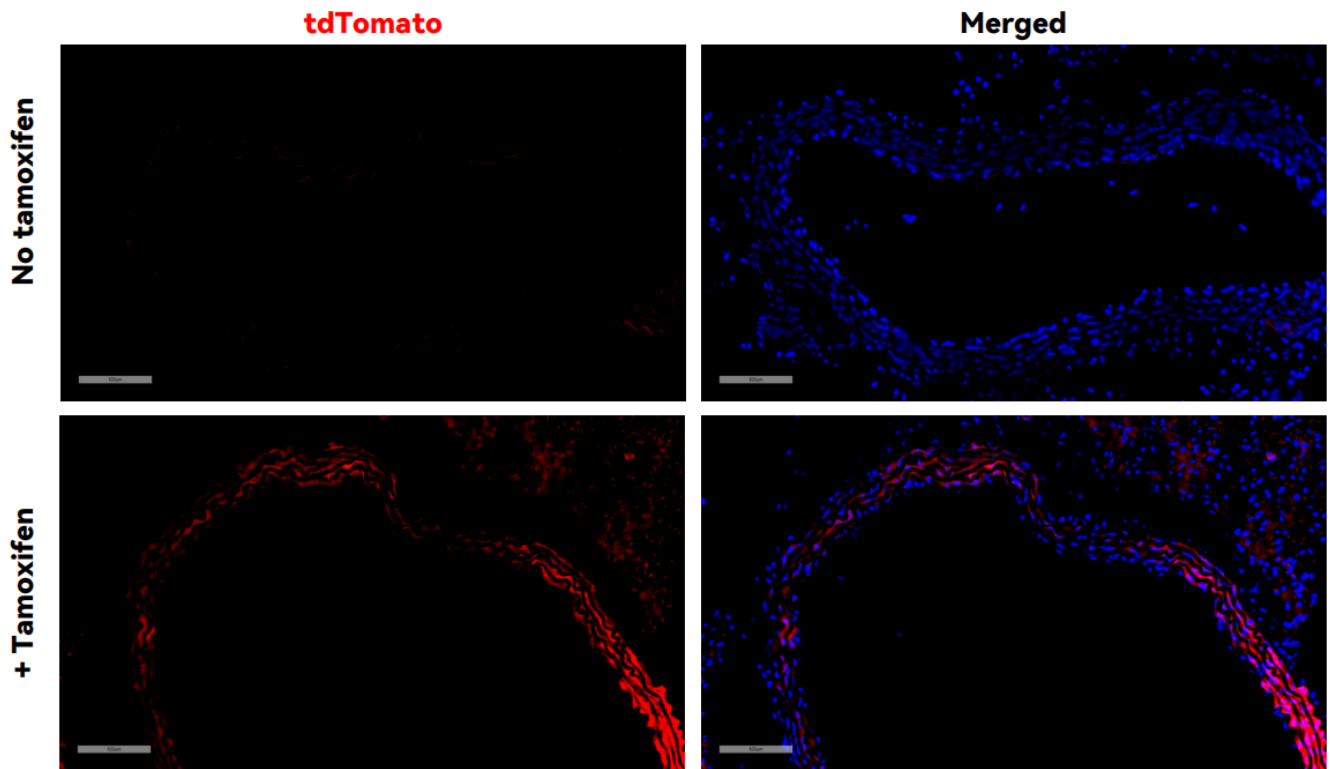


Fig1. CreERT2-mediated recombination in aorta of  $Tagln^{CreERT2/+};Rosa26^{tdTomato/+}$  mouse.

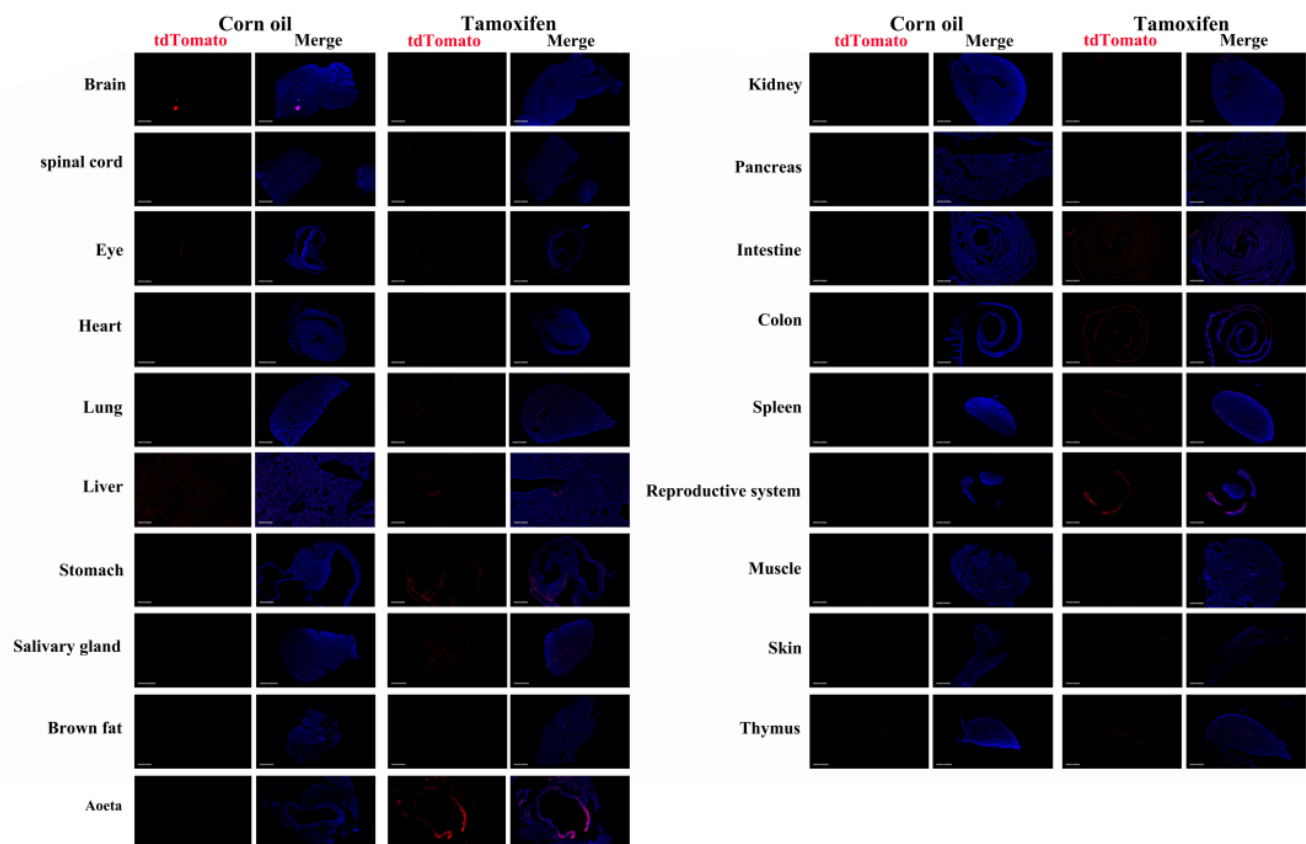


Fig2. Detection of tdTomato(red) in various tissues of  $Tagln^{CreERT2/+};Rosa26^{tdTomato/+}$  mice. (For more detailed information please contact our technical advisor.)

