

Zbtb46-2A-CreERT2

也叫zDC-CreERT2。将2A-CreERT2-WPRE-pA共表达结构插入到小鼠内源Zbtb46基因终止密码子前，建立Zbtb46-CreERT2基因敲入工具鼠模型。他莫昔芬诱导型CreERT2受内源Zbtb46基因启动子驱动，可用于在经典树突细胞（cDC）中敲除floxed基因序列。

品系全名	C57BL/6JSm0-Zbtb46 ^{em1(2A-CreERT2-WPRE-pA)Smoc}
目录号	NM-KI-18021
品系状态	胚胎冻存

基因信息

基因名 Zbtb46	基因曾用名	BZEL; Btd4; 2610019F01Rik; 4933406L05Rik
	NCBI ID	72147
	MGI ID	1919397
	Ensembl ID	ENSMUSG00000027583
	人类同源基因	ZBTB46

品系描述

也叫zDC-CreERT2。将2A-CreERT2-WPRE-pA共表达结构插入到小鼠内源Zbtb46基因终止密码子前，建立Zbtb46-CreERT2基因敲入工具鼠模型。他莫昔芬诱导型CreERT2受内源Zbtb46基因启动子驱动，可用于在经典树突细胞（cDC）中敲除floxed基因序列。

应用领域：经典树突细胞（cDC）Cre工具鼠

*使用本品系发表的文献需注明: Zbtb46-2A-CreERT2 mice (Cat. NO. NM-KI-18021) were purchased from Shanghai Model Organisms Center, Inc..

验证数据

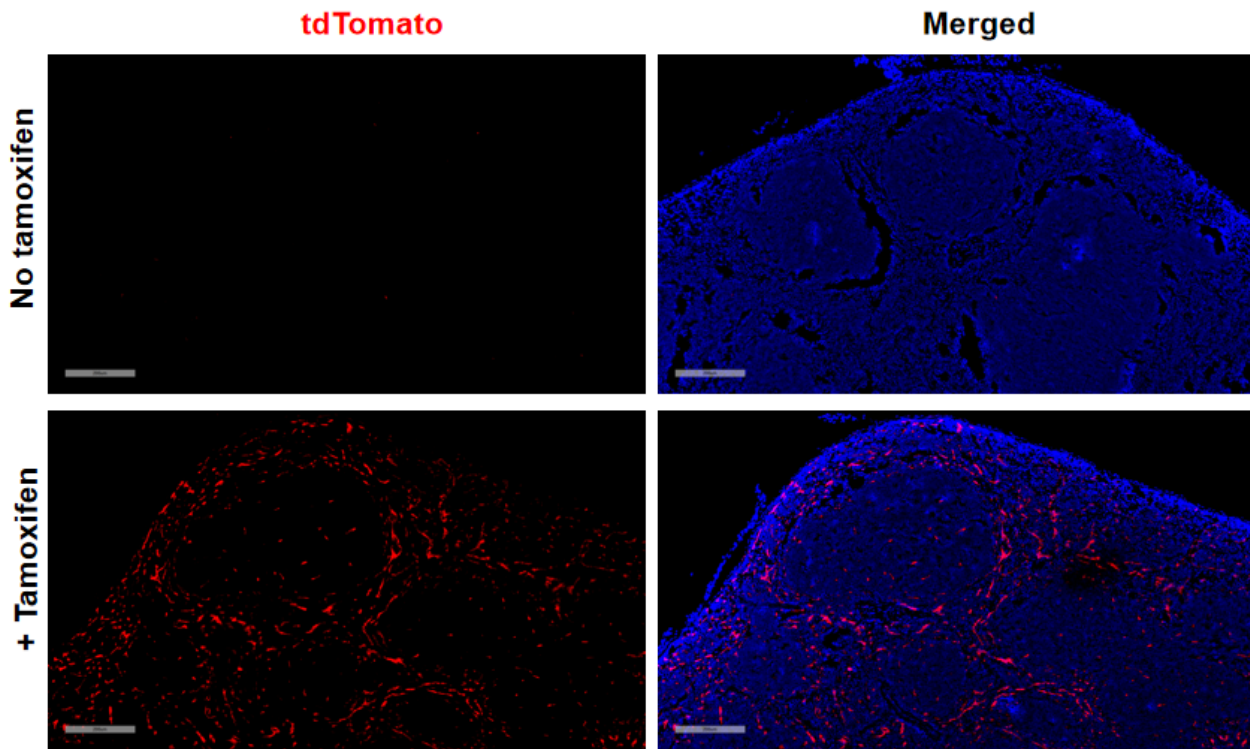


Fig 1. Cre-mediated recombination in spleen of *Zbtb46^{CreERT2/+}; Rosa26^{tdTomato/+}* mice.

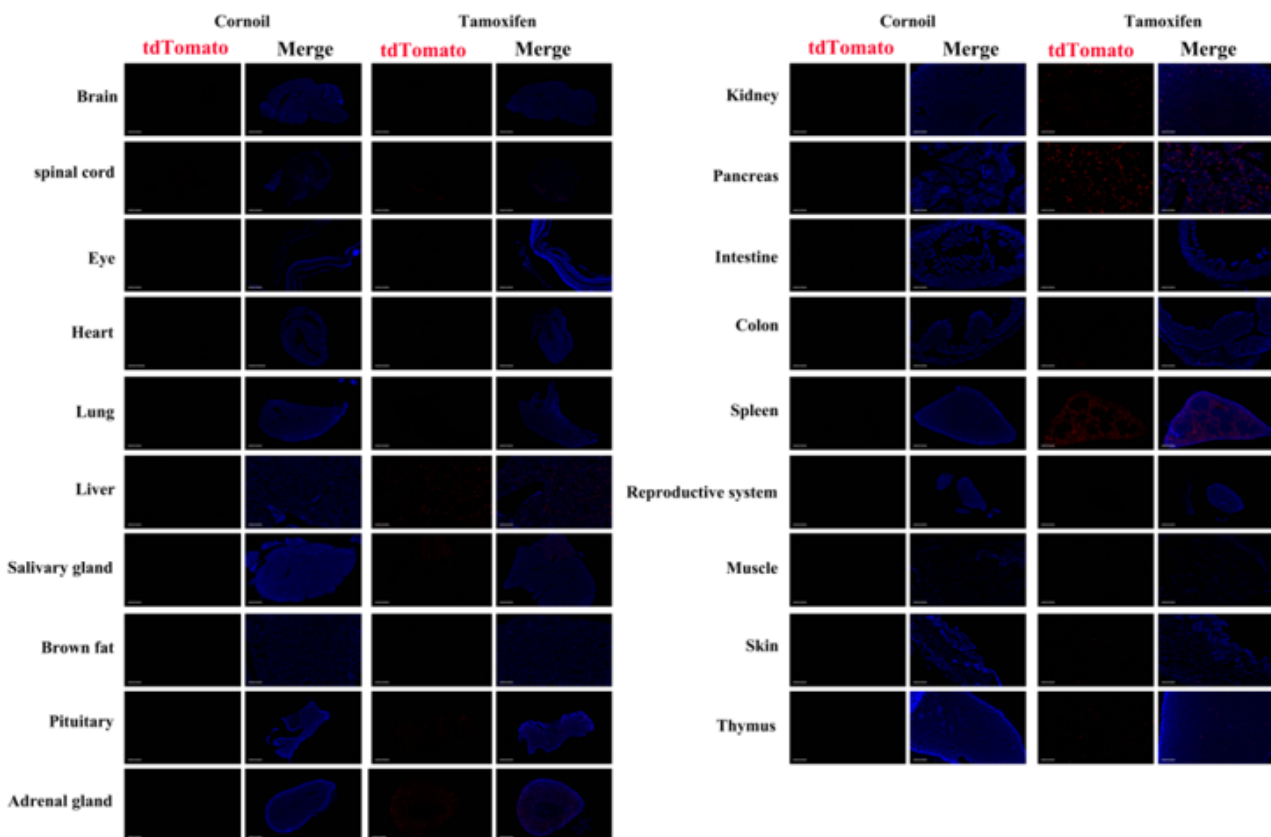


Fig 2. Detection of tdTomato (red) in various tissues of *Zbtb46^{CreERT2/+}; Rosa26^{tdTomato/+}*. Expression tissues include: liver, salivary gland, pituitary gland, adrenal gland, kidney, pancreas, spleen, testis, thymus. A few cells expressed in cerebellum, spinal cord, heart,

brown fat, small intestine, colon, muscle, skin. (6.5-8 weeks old, male) (For more detailed information please contact our technical advisor.)
