

Tagln-Cre

品系全名	C57BL/6Smoc- <i>Tagln</i> ^{em1(Cre-WPRE-polyA)Smoc}
目录号	NM-KI-200144
品系状态	活体

基因信息

基因名 Tagln	基因曾用名	Sm22; Sm22a; Ws310
	染色体位置	9
	NCBI ID	21345
	MGI ID	106012
	Ensembl ID	ENSMUSG00000032085

品系描述

A Cre-WPRE-polyA expression cassette was knocked into the Tagln gene start codon site. This gene encodes a smooth muscle cell-specific cytoskeletal protein. When crossed with a strain carrying a gene flanked by loxP sites, the flanked gene will be removed in vascular smooth muscle cells. In mouse models of atherosclerosis, the gene product may be involved in plaque cell and atherosclerotic lesion formation during atherogenesis.

应用领域: Cre recombinase tool

*使用本品系发表的文献需注明: Tagln-Cre mice (Cat. NO. NM-KI-200144) were purchased from Shanghai Model Organisms Center, Inc..

验证数据

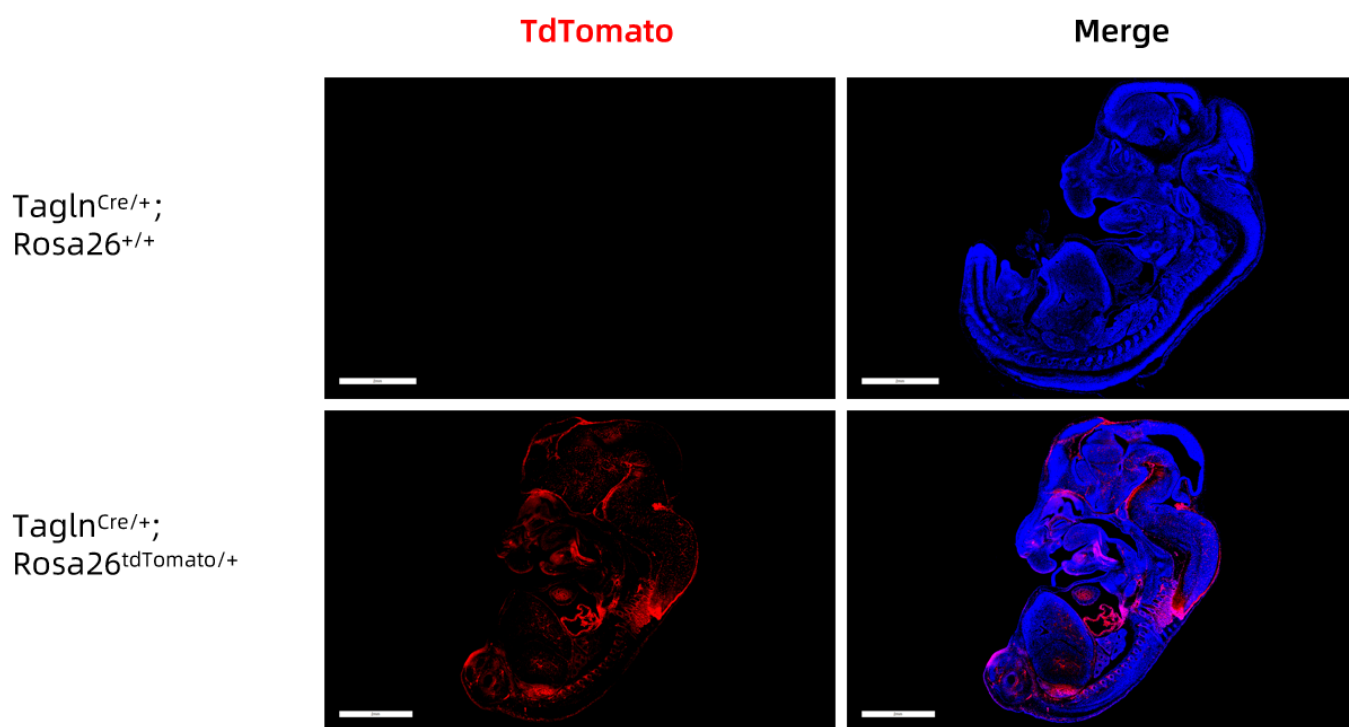


Fig. 1 Cre-mediated recombination in the embryo of Tagln^{Cre/+}; Rosa26^{tdTomato/+} mouse. TdTomato(red) expression can be detected in the vessels of E11.5 Tagln^{Cre/+}; Rosa26^{tdTomato/+} mouse embryo.

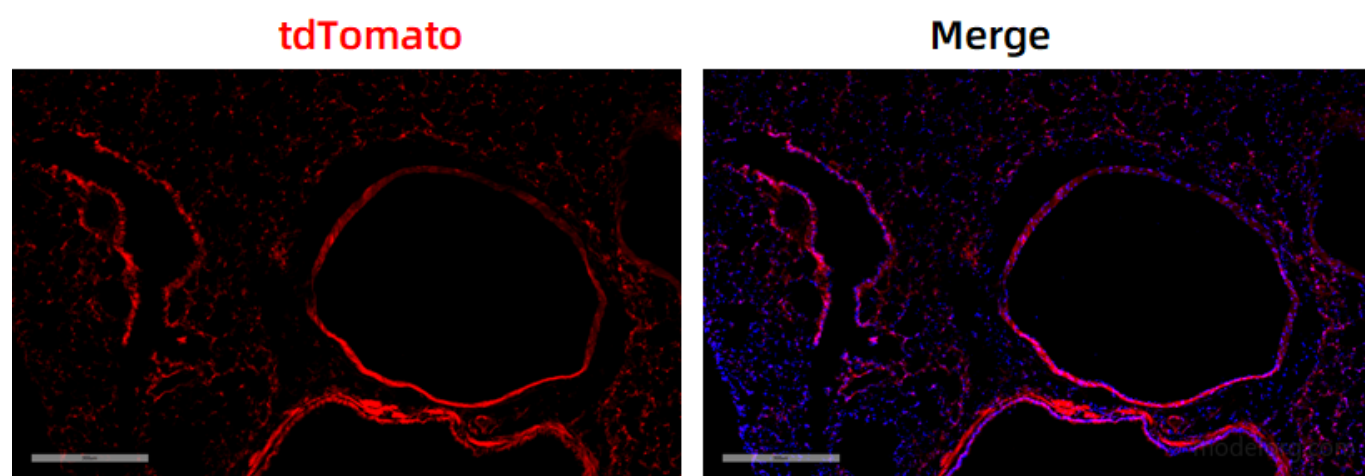


Fig. 2 Cre-mediated recombination in the lung of Tagln^{Cre/+}; Rosa26^{tdTomato/+} mouse. TdTomato(red) expression can be detected in the pulmonary vascular smooth muscle cells of Tagln^{Cre/+}; Rosa26^{tdTomato/+} mouse.

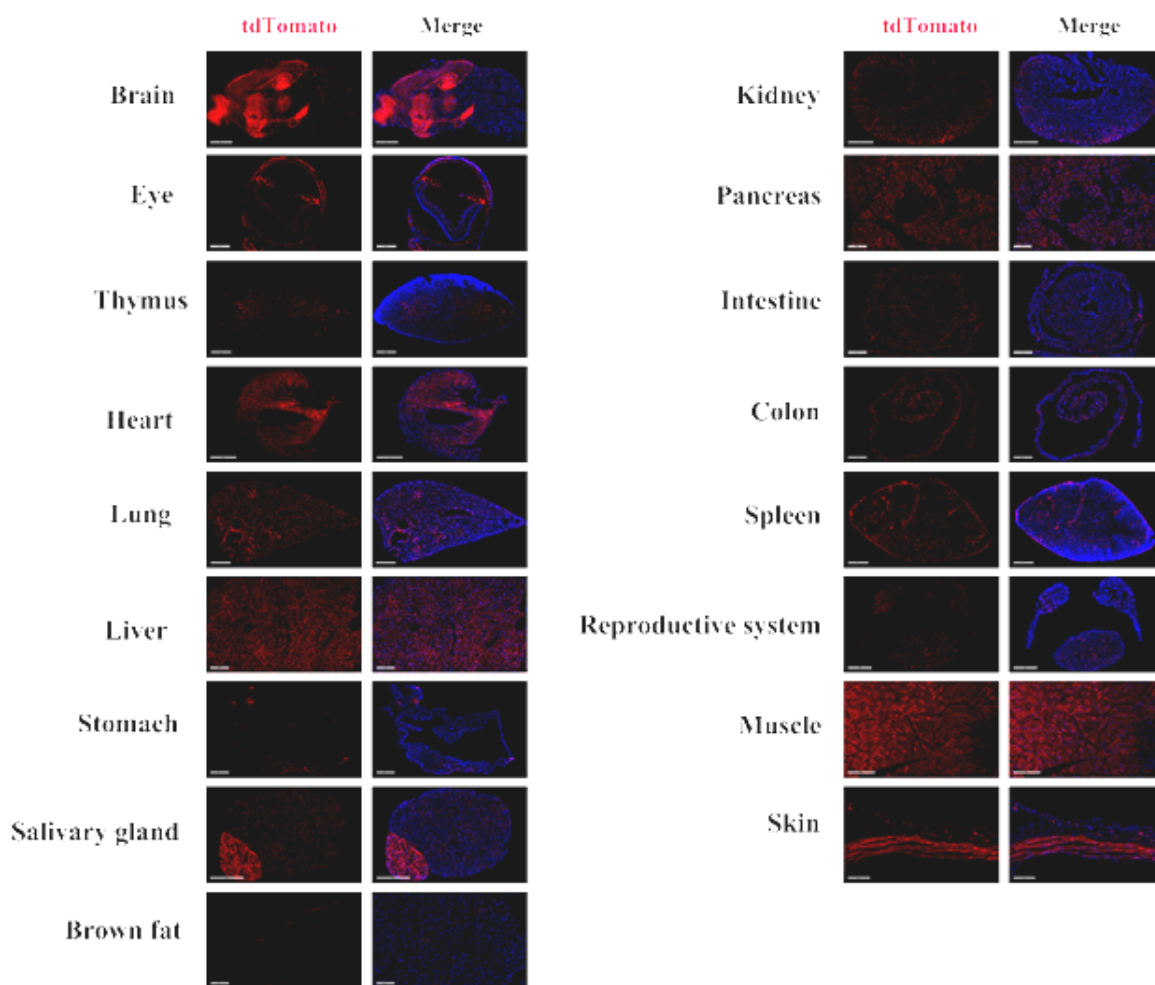


Fig. 3 Detection of tdTomato(red) in various tissues of Tagln^{Cre/+}; Rosa26^{tdTomato/+} mice. Tdtomato was abundantly expressed in the brain, eyes, heart, liver, lung, muscle, pancreas, testis, epididymis, salivary gland, spleen and thymus. Tdtomato was also detected in some cells of the colon, intestine, kidney, skin and in individual cells of brown fat and stomach. (For more detailed information please contact our technical advisor.)