

R26-CreERT2

品系全名	C57BL/6Smoc- <i>Gt(ROSA)26Sor</i> ^{em1(SA-FRT-2xpolyA-CAG-FRT-CreERT2-Rox-WPRE-Rox-polyA)Smoc}
目录号	NM-KI-200041
品系状态	活体

基因信息

基因名 Gt(ROSA)26Sor	基因曾用名	R26, ROSA26, AV258896, Gtrgeo26, Gtrosa26, Thumpd3as1
	NCBI ID	14910
	MGI ID	104735
	Ensembl ID	ENSMUSG00000086429

品系描述

These mice harbor a SA-FRT-2xpolyA-CAG-FRT-CreERT2-Rox-WPRE-Rox-polyA cassette in the Rosa26 locus generated by homologous recombination. When crossed with a strain carrying a gene flanked by loxP sites, the flanked gene will be removed in multiple tissues after tamoxifen treatment.

应用领域: Cre recombinase tool

*使用本品系发表的文献需注明: R26-CreERT2 mice (Cat. NO. NM-KI-200041) were purchased from Shanghai Model Organisms Center, Inc..

验证数据

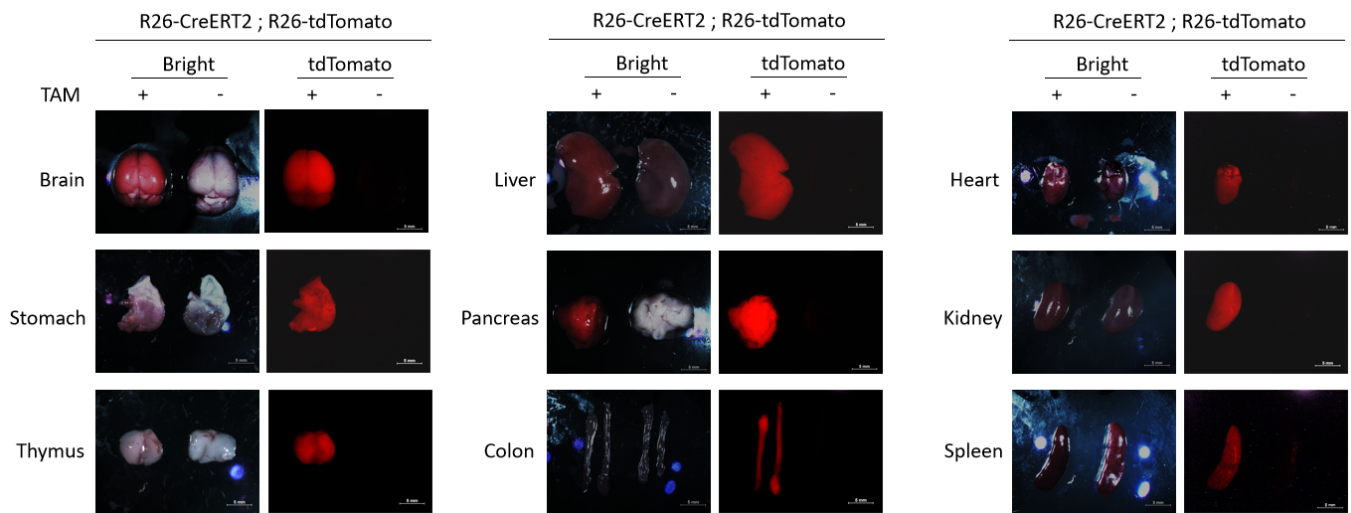


Fig1. Detection of tdTomato(red) in various tissues of R26CreERT2/+; Rosa26tdTomato/+ mice by fluorescence assay. Expression tissues include: brain, liver, stomach, thymus, pancreas, colon, heart, kidney and spleen. (For more detailed information please contact our technical advisor.)

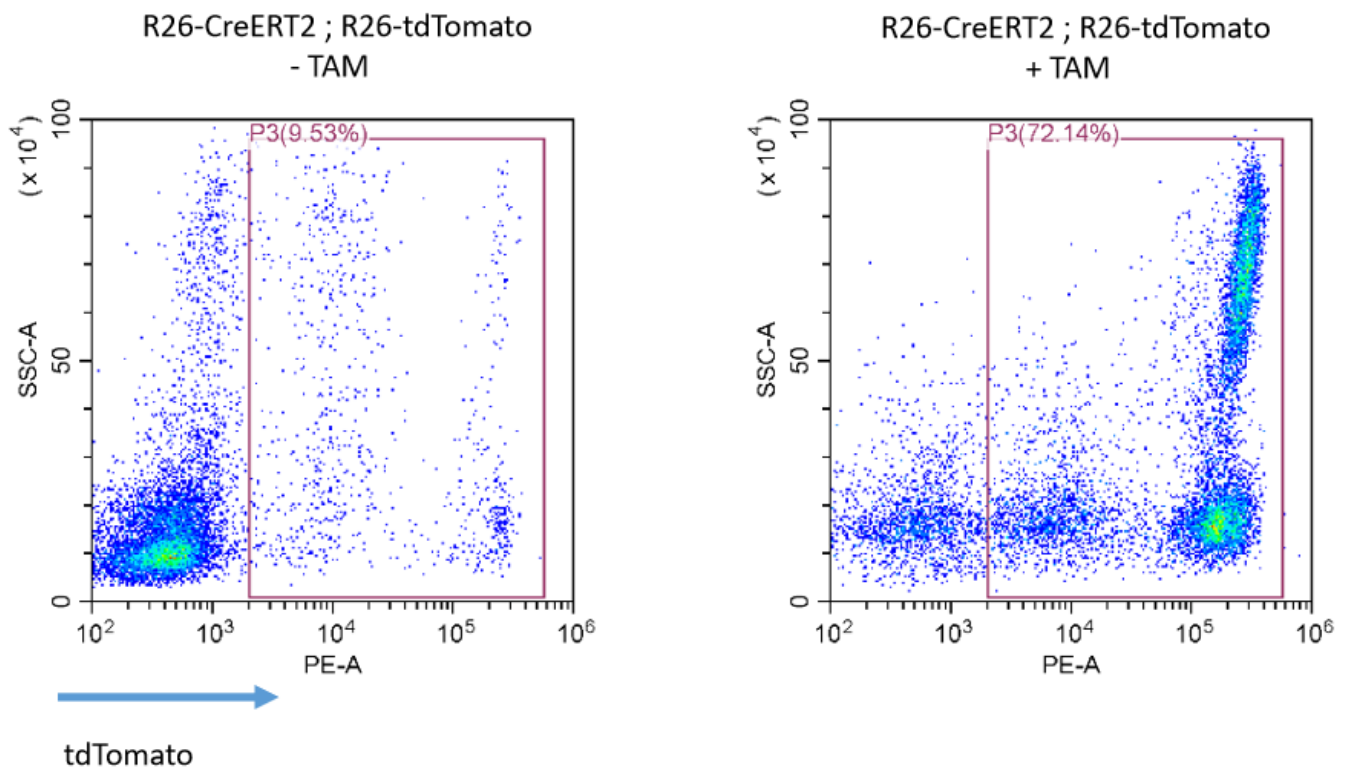


Fig2. CreERT2-mediated recombination in peripheral blood of R26CreERT2/+; Rosa26tdTomato/+ mice.