

hMASP2

品系全名	C57BL/6Smoc- <i>Masp2</i> ^{em1(hMASP2)/Smoc}
目录号	NM-HU-2000076
品系状态	胚胎冻存

基因信息

基因名 Masp2	基因曾用名	MAp19; MASP-2
	NCBI ID	17175
	MGI ID	1330832
	Ensembl ID	ENSMUSG00000028979
	人类同源基因	MASP2

品系描述

The endogenous mouse Masp2 gene was replaced by human MASP2 gene.

应用领域: Immunotherapy, drug screening

*使用本品系发表的文献需注明: hMASP2 mice (Cat. NO. NM-HU-2000076) were purchased from Shanghai Model Organisms Center, Inc..

验证数据

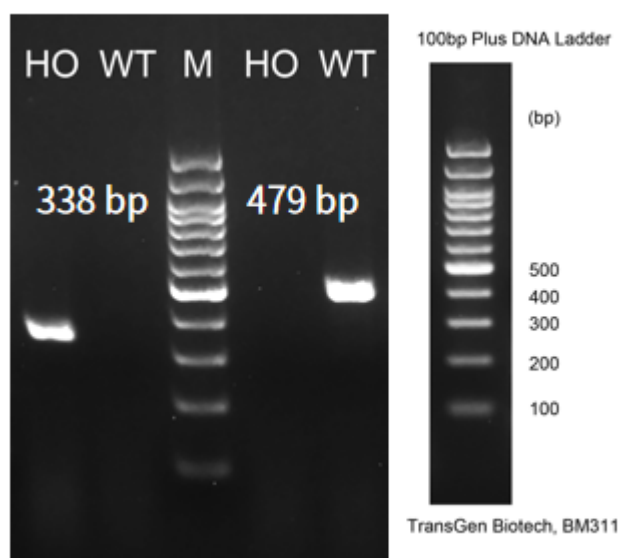


Fig1. Detection of MASP2 expression in liver by RT-PCR.

Wild type: only one band at 479 bp with primers F1/R1(mMasp2);

Homozygous: only one band at 338 bp with primers F2/R2(hMASP2);

Abbr. M, DNA marker; HO, homozygous; WT, wild type.

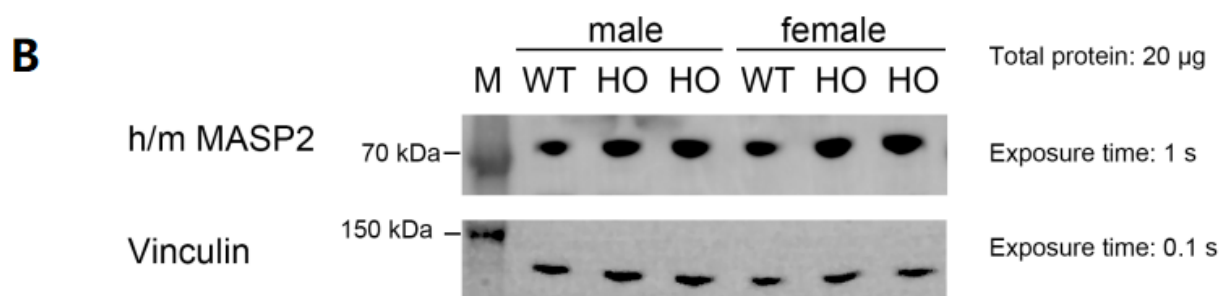
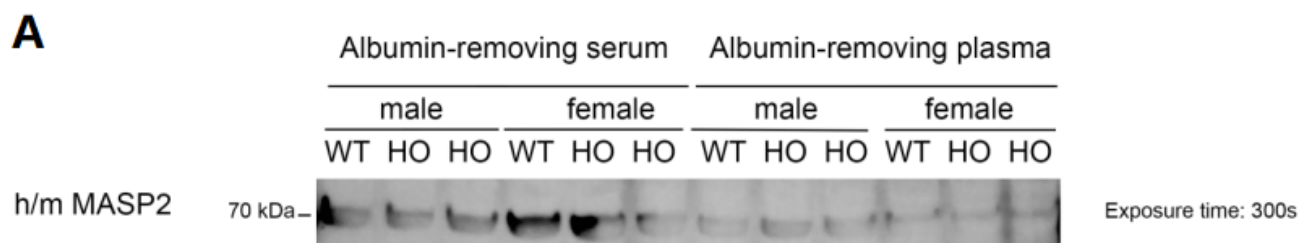
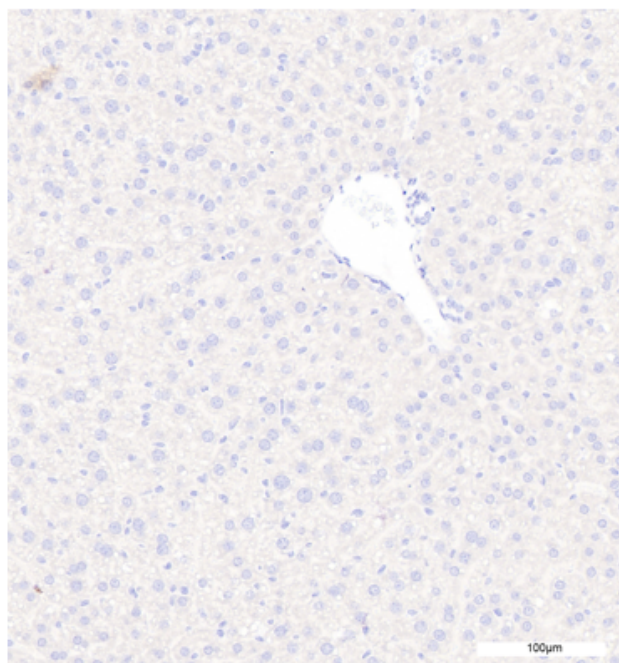


Fig2. Detection of human MASP2 expression in Blood (A) and Liver (B) of WT C57BL/6 and HO hMASP2 mice by Western blot. (7 weeks old)

Abbr. HO, homozygous; WT, wild type.

Isotype Control



Anti-human MASP2

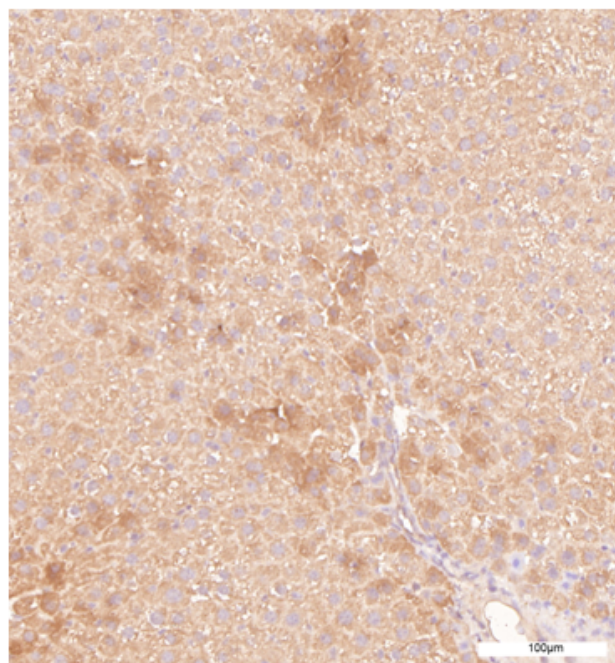
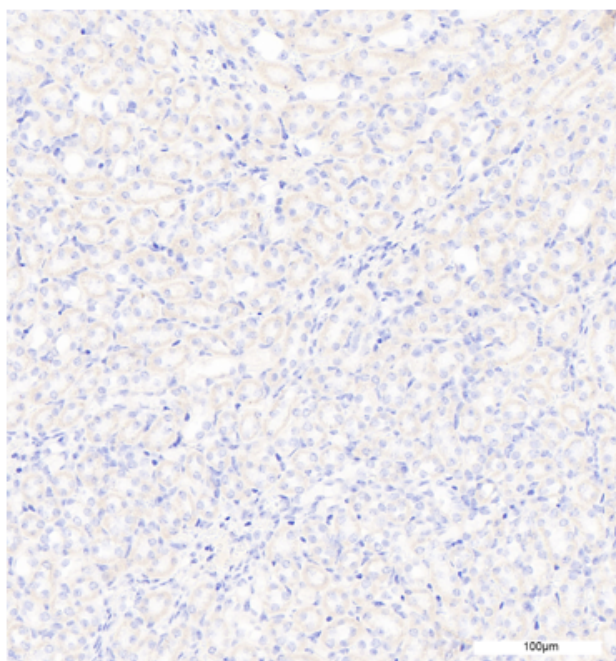


Fig3. Detection of hMASP2 expression in liver in HO hMASP2 mice by IHC. (female, 13 weeks old)

Abbr. HO, homozygous; WT, wild type.

Isotype Control



Anti-human MASP2

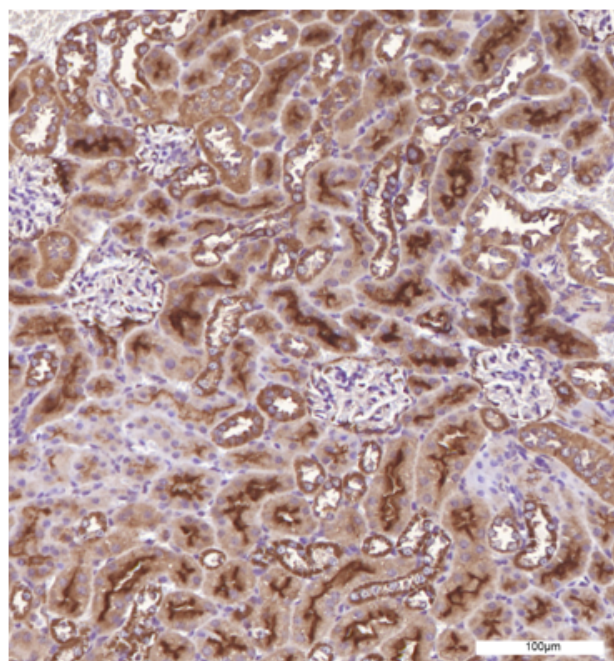


Fig4. Detection of hMASP2 expression in kidney in HO hMASP2 mice by IHC. (female, 13 weeks old)

Abbr. HO, homozygous; WT, wild type.

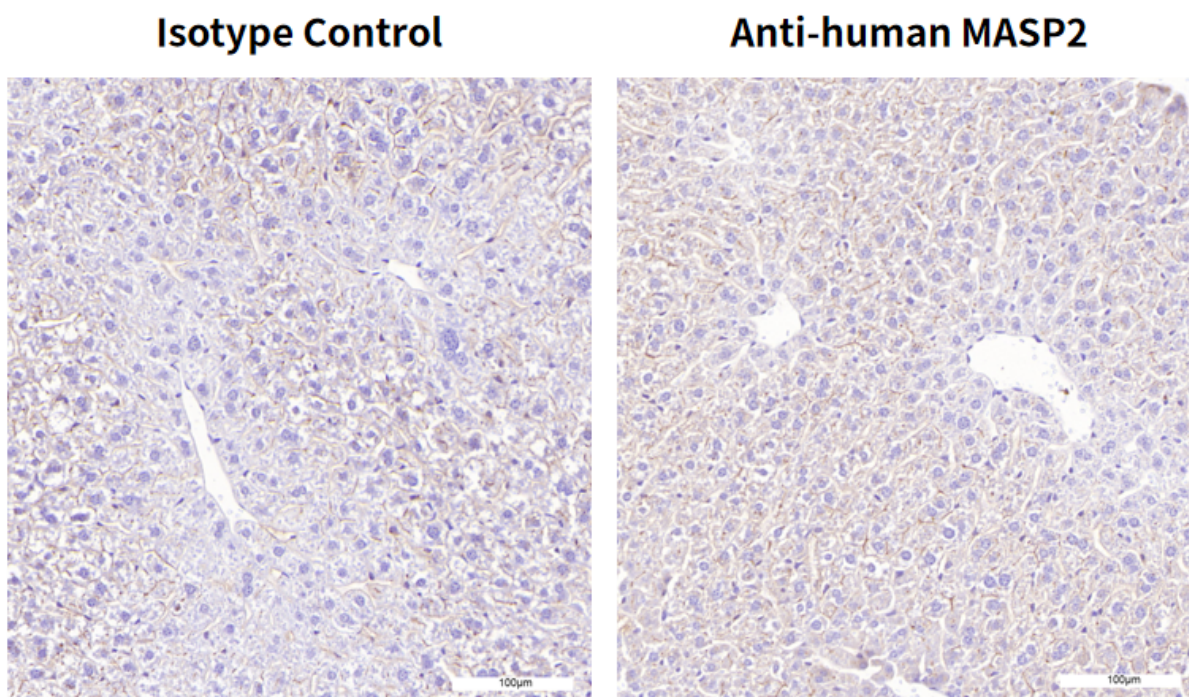


Fig5. Detection of IgA expression in liver in HO hMASP2 mice by IHC. (female, 13 weeks old)

Abbr. HO, homozygous; WT, wild type.

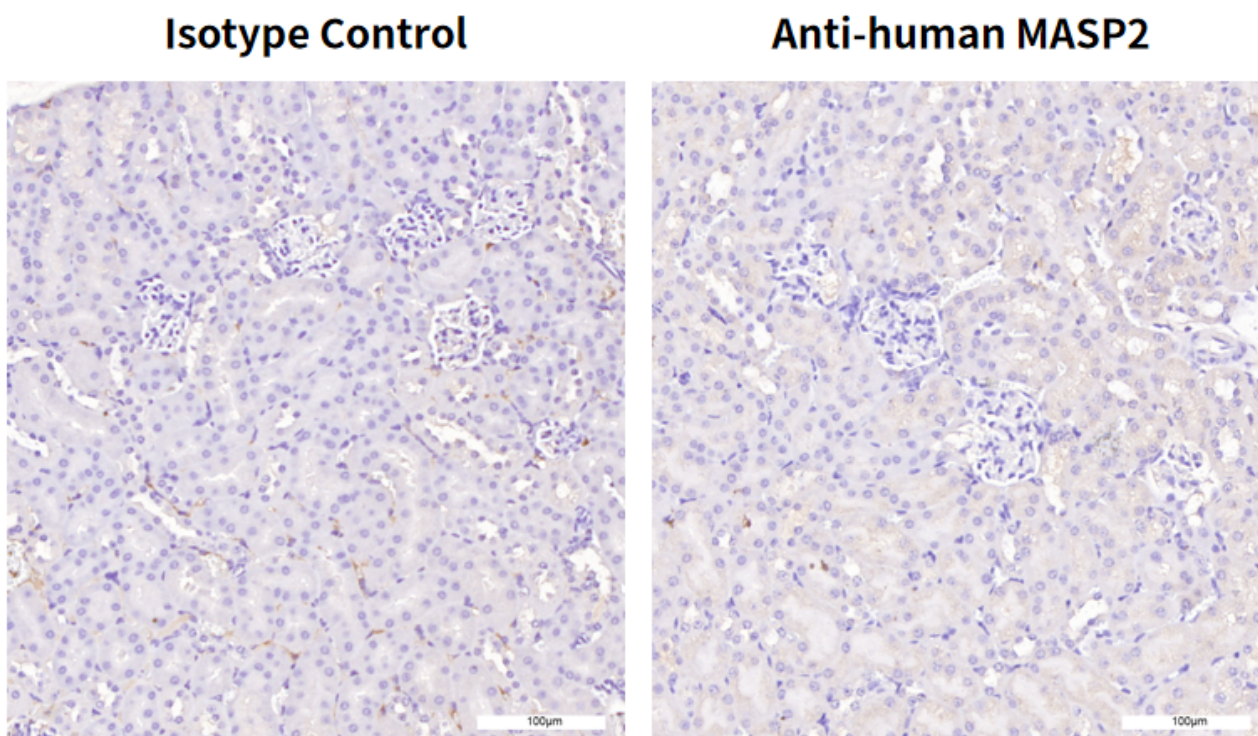
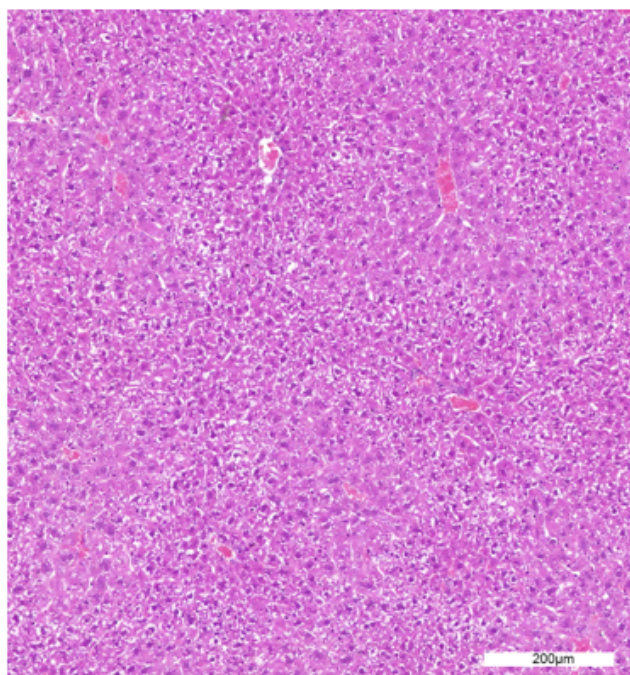


Fig6. Detection of IgA expression in kidney in HO hMASP2 mice by IHC. (female, 13 weeks old)

Abbr. HO, homozygous; WT, wild type.

Isotype Control



Anti-human MASP2

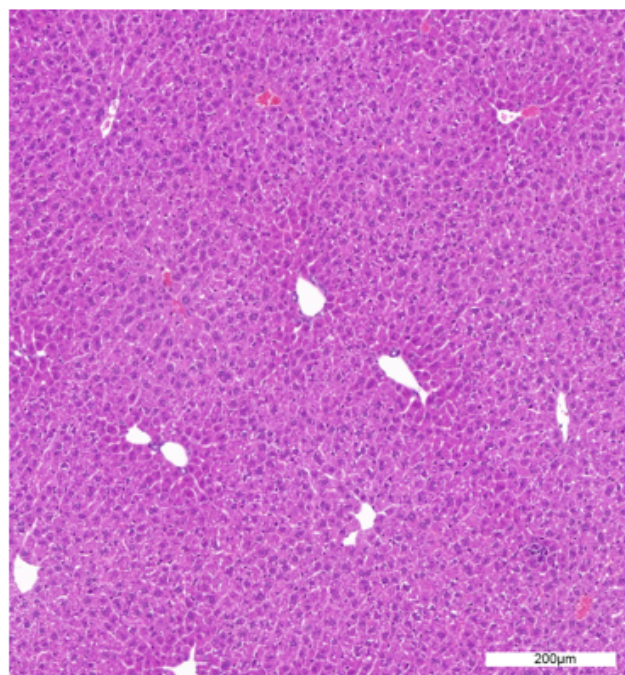
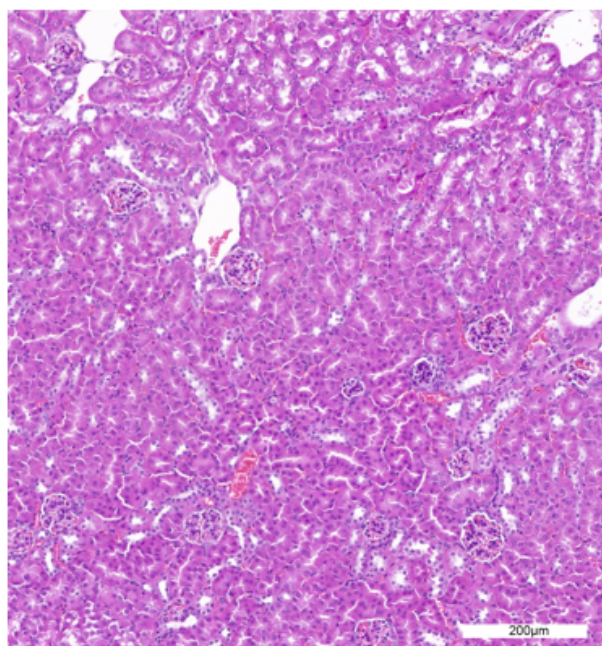


Fig7. No obvious pathological features were found in liver in HO hMASP2 mice. (female, 13 weeks old)

Abbr. HO, homozygous; WT, wild type.

Isotype Control



Anti-human MASP2

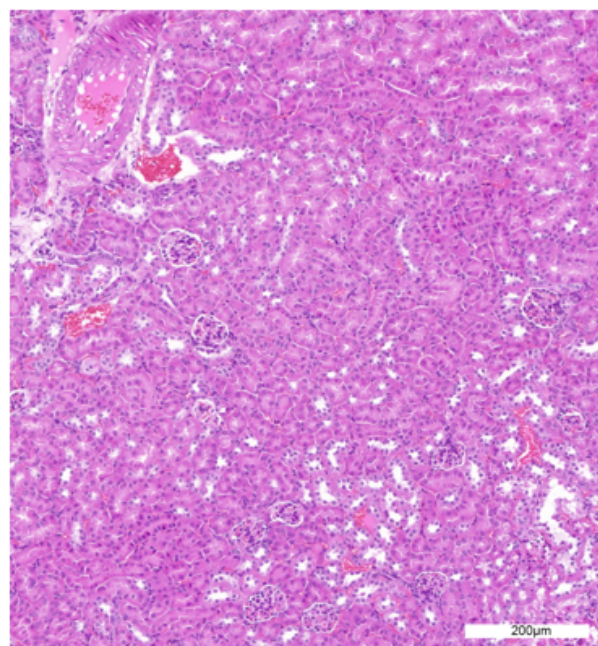


Fig8. No obvious pathological features were found in kidney in HO hMASP2 mice. (female, 13 weeks old)

Abbr. HO, homozygous; WT, wild type.

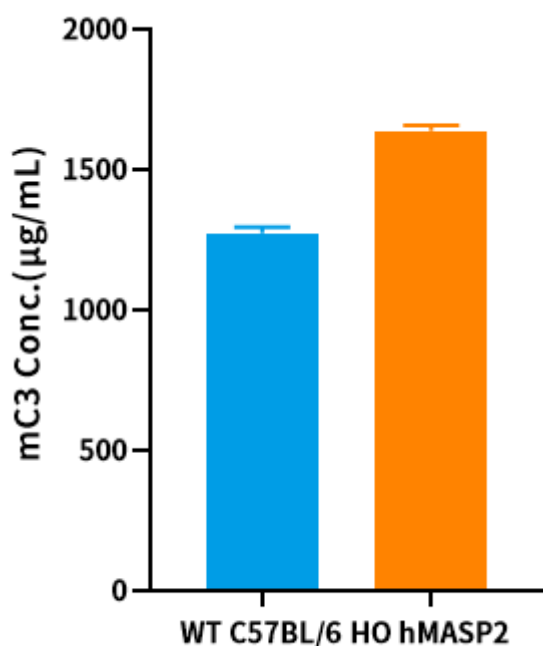


Fig9. Detection of mC3 expression in serum by ELISA. (female, 12 weeks old)

Abbr. HO, homozygous; WT, wild type.

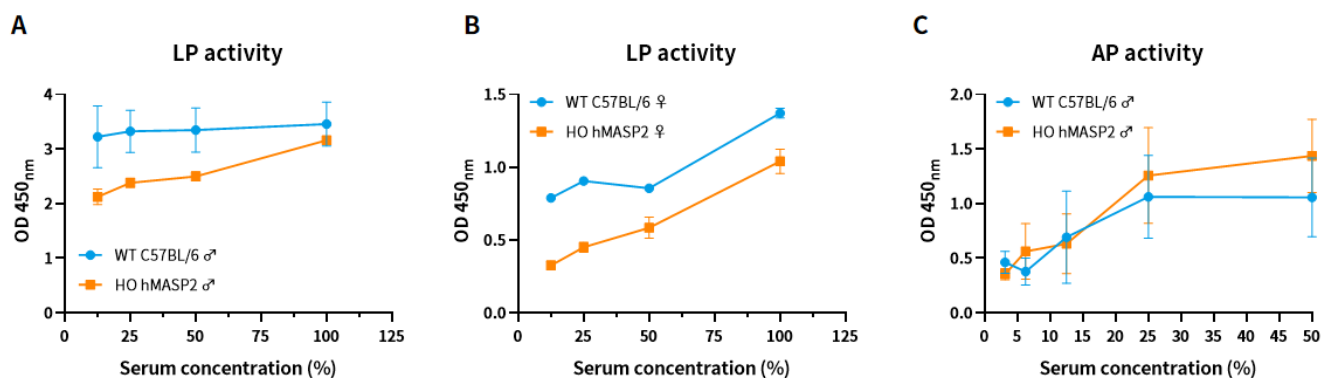


Fig10. Lectin and alternative pathway activity of HO hMASP2 mice.

LP activity in serum of age-matched female (A) and male (B) wild-type C57BL/6 and HO hMASP2 mice at different dilutions (n=3/group); (C) AP activity in serum of age-matched male wild-type C57BL/6 and HO hMASP2 mice at different dilutions (n=3/group).

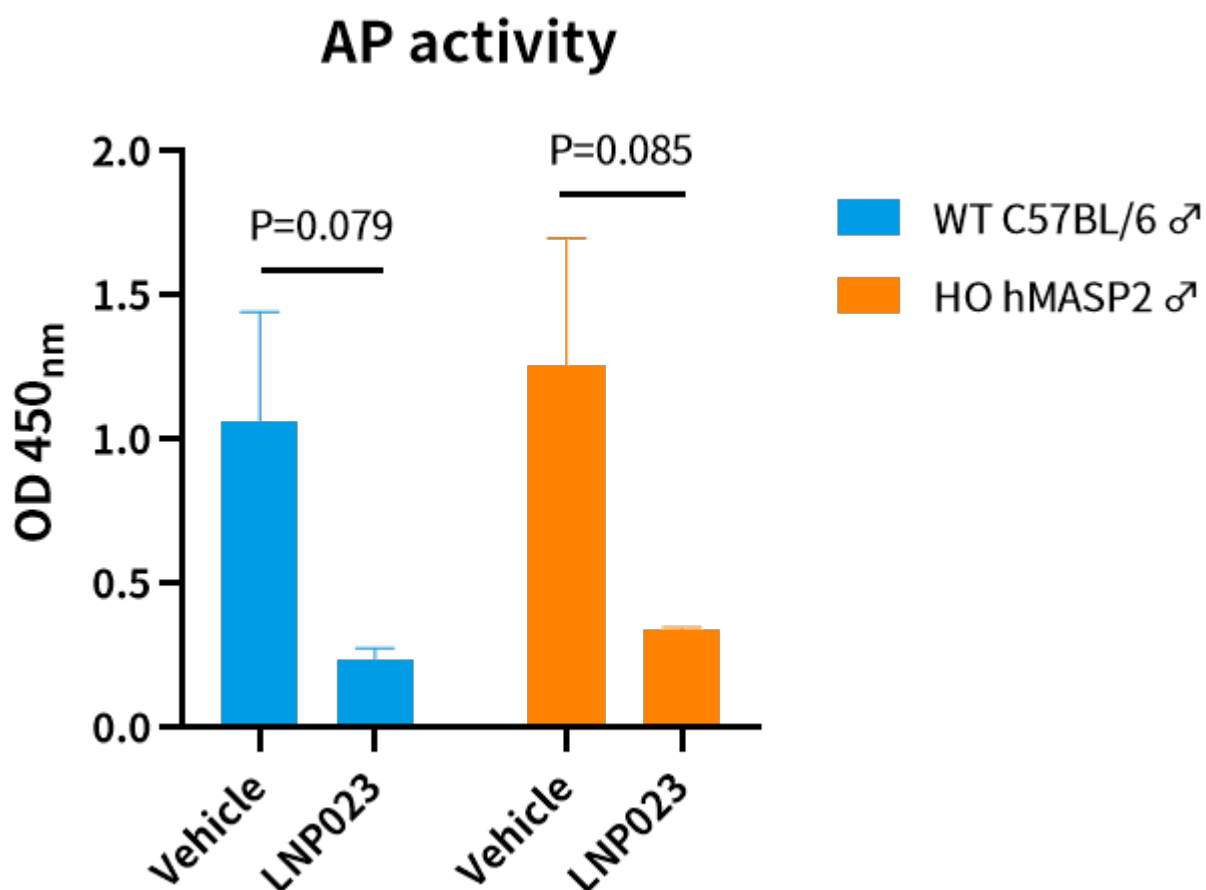


Fig11. LNP023 blocks alternative complement pathway activity in the serum of age-matched male wild-type C57BL/6 and HO hMASP2 mice (n=3/group).