

Cx3cr1-Cre

| | |
|------|---|
| 品系全名 | C57BL/6Smoc- <i>Cx3cr1</i> ^{em1(iCre)Smoc} |
| 目录号 | NM-KI-200079 |
| 品系状态 | 活体 |

基因信息

| | | |
|---------------|------------|------------------------------------|
| 基因名 Cx3cr1 | 基因曾用名 | - |
| | NCBI ID | 13051 |
| | MGI ID | 1333815 |
| | Ensembl ID | ENSMUSG00000052336 |
| | 人类同源基因 | CX3CR1 |

品系描述

利用CRISPR基因编辑技术，将iCre替换小鼠Cx3cr1基因的编码区。

应用领域： Cre工具鼠,单核吞噬细胞系统

*使用本品系发表的文献需注明: Cx3cr1-Cre mice (Cat. NO. NM-KI-200079) were purchased from Shanghai Model Organisms Center, Inc..

验证数据

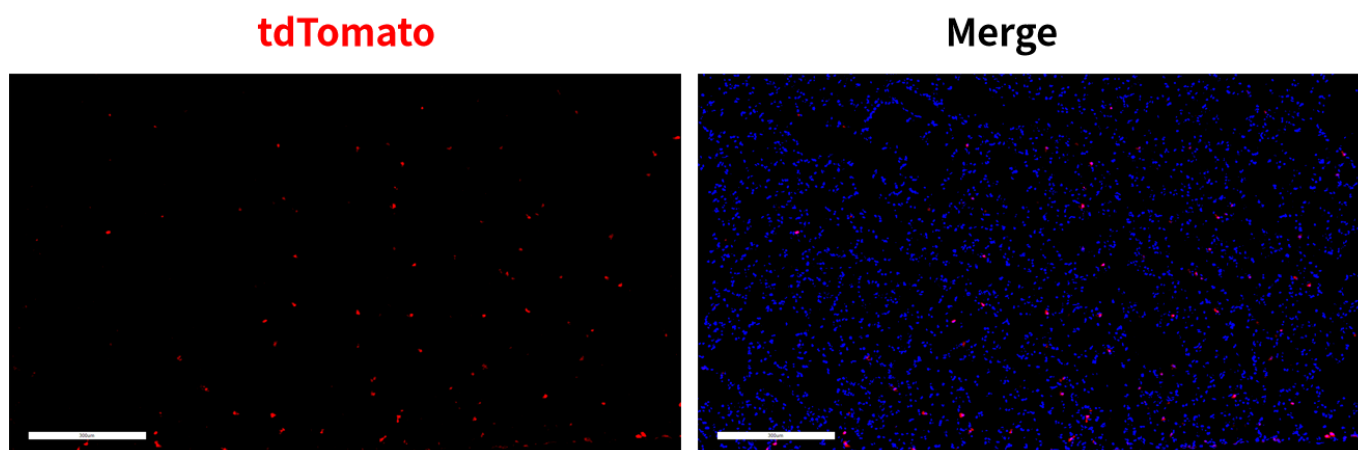


Fig. 1 Cre-mediated recombination in the lung of *Cx3cr1*^{Cre/+}; *Rosa26*^{tdTomato/+} mouse. TdTomato(red) expression can be detected in the pulmonary macrophage of *Cx3cr1*^{Cre/+};

Rosa26tdTomato/+ mouse.

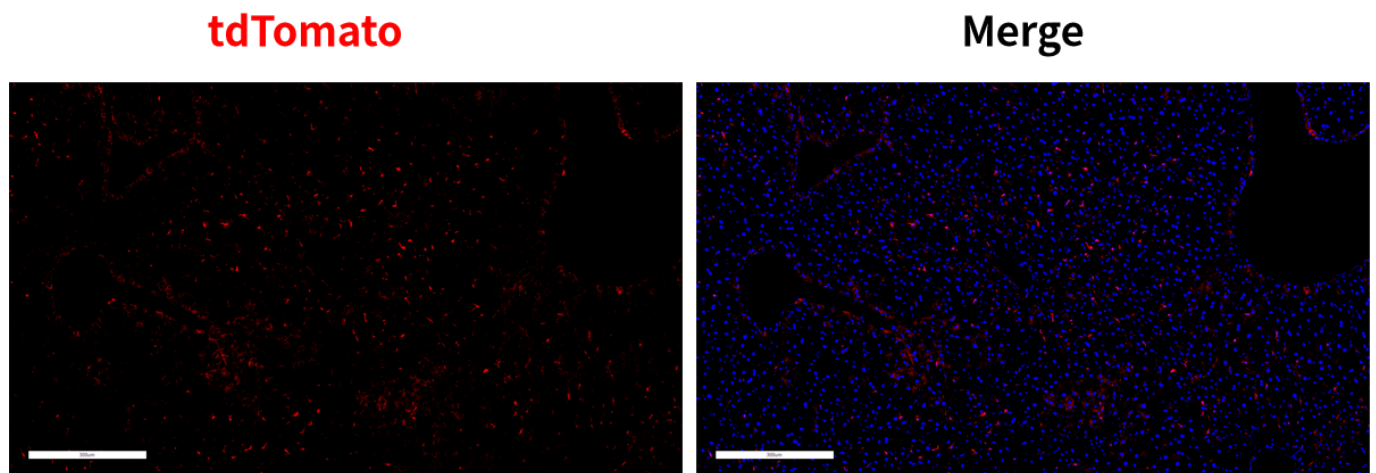


Fig. 2 Cre-mediated recombination in the liver of *Cx3cr1*^{Cre/+}; *Rosa26*^{tdTomato/+} mouse. TdTomato(red) expression can be detected in the hepatic kupffer cells of *Cx3cr1*^{Cre/+}; *Rosa26*^{tdTomato/+} mouse.

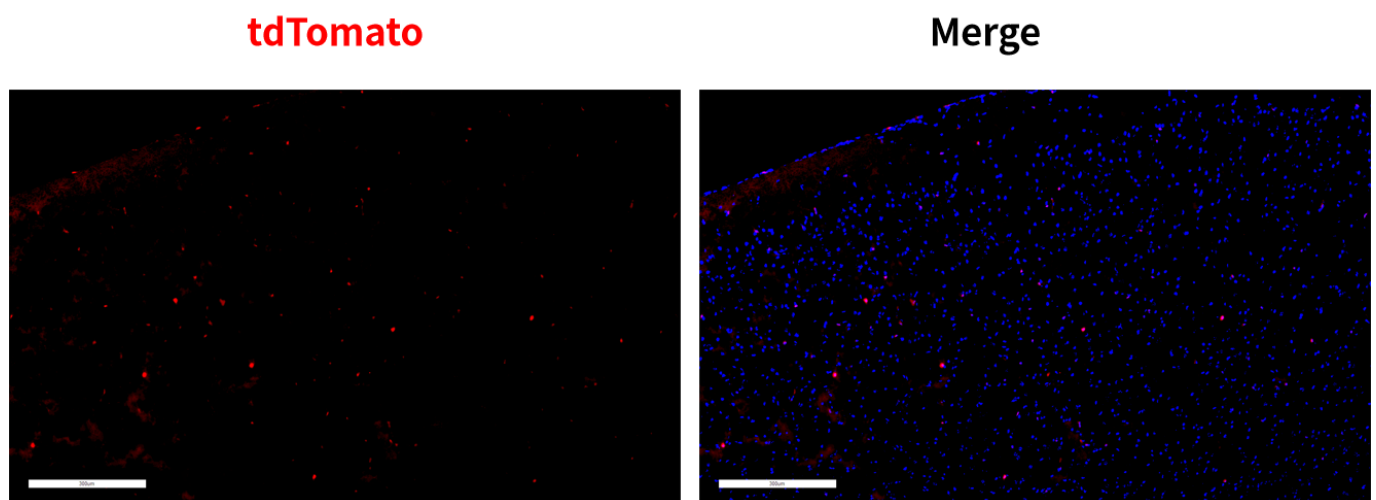


Fig. 3 Cre-mediated recombination in the brain of *Cx3cr1*^{Cre/+}; *Rosa26*^{tdTomato/+} mouse. TdTomato(red) expression can be detected in the microglial cells of *Cx3cr1*^{Cre/+}; *Rosa26*^{tdTomato/+} mouse.

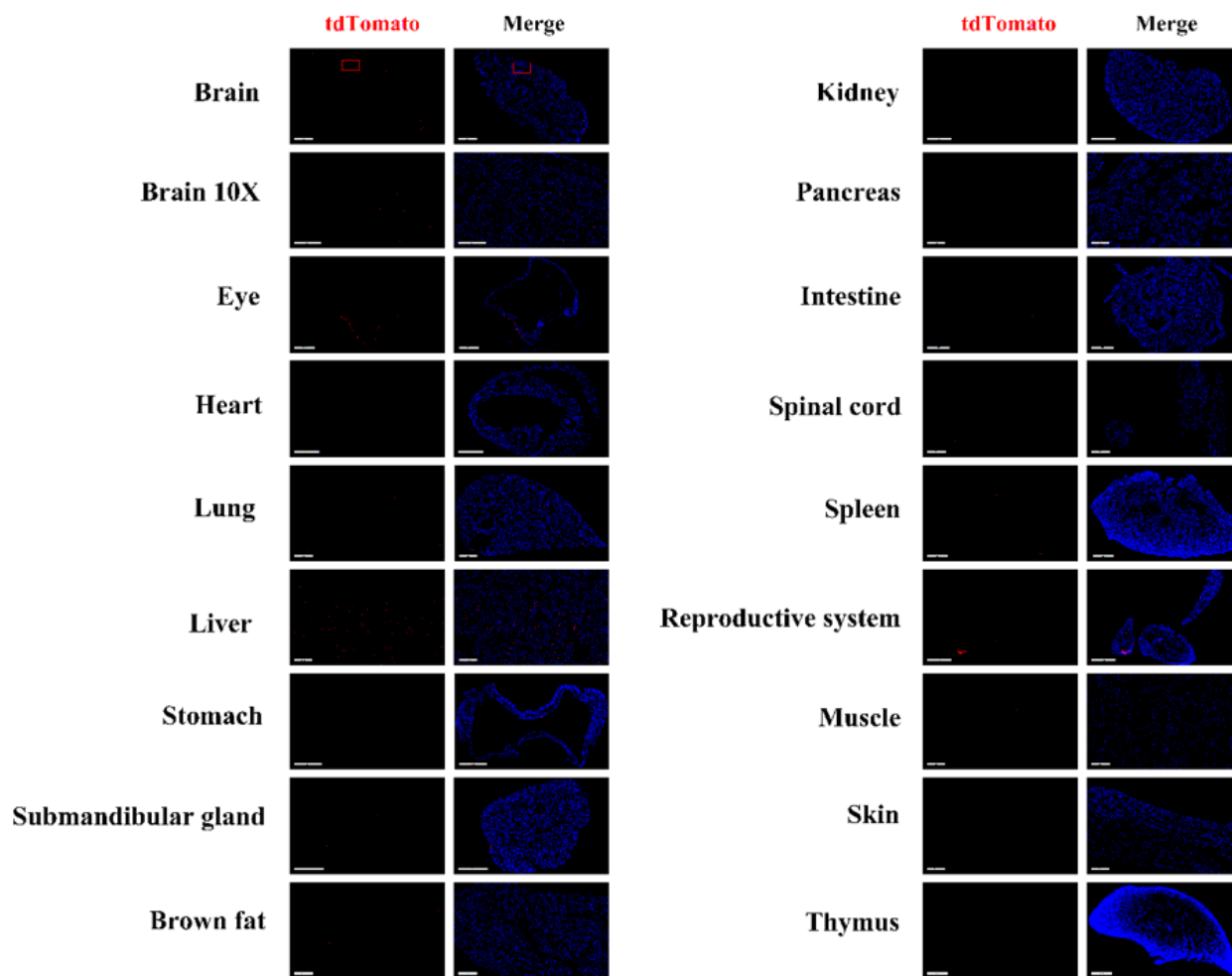


Fig. 4 Detection of tdTomato(red) in various tissues of *Cx3cr1^{Cre/+}; Rosa26^{tdTomato/+}* mice. Cre mediated recombination can be detected in some cells of the brain, liver, lung, stomach, salivary gland, small intestine, spinal cord, spleen, testis and epididymis, skin and subcutaneous tissue, skeletal muscle and thymus. Tdtomato expression can not be observed in the brown fat, heart, retina, kidney or pancreas. (For more detailed information please contact our technical advisor.)

发表文献

[Cytoplasmic Escape of Mitochondrial DNA Mediated by Mfn2 Downregulation Promotes Microglial Activation via cGas-Sting Axis in Spinal Cord Injury](#)

来源杂志: Advanced Science

[HDAC3 Mediates Hippocampal Microglial Pyroptosis Via the STING/NLRP3 Pathway and Contributes To Cognitive Impairment in Sepsis-Associated Encephalopathy](#)

来源杂志: INFLAMMATION