

H11-CAG-LSL-H2B-EGFP-CAG-RSR-tdTomato

将CAG-LSL-H2B-EGFP-WPRE-pA-CAG-RSR-tdTomato-WPRE-pA插入到小鼠H11位点。

品系全名	C57BL/6JSm ^o - <i>Igs2</i> ^{em1(CAG-LSL-H2B-EGFP-WPRE-pA-CAG-RSR-tdTomato-WPRE-pA)Smoc}
目录号	NM-KI-240880
品系状态	精子冻存

基因信息

品系描述

将CAG-LSL-H2B-EGFP-WPRE-pA-CAG-RSR-tdTomato-WPRE-pA插入到小鼠H11位点。

*使用本品系发表的文献需注明: H11-CAG-LSL-H2B-EGFP-CAG-RSR-tdTomato mice (Cat. NO. NM-KI-240880) were purchased from Shanghai Model Organisms Center, Inc..

验证数据

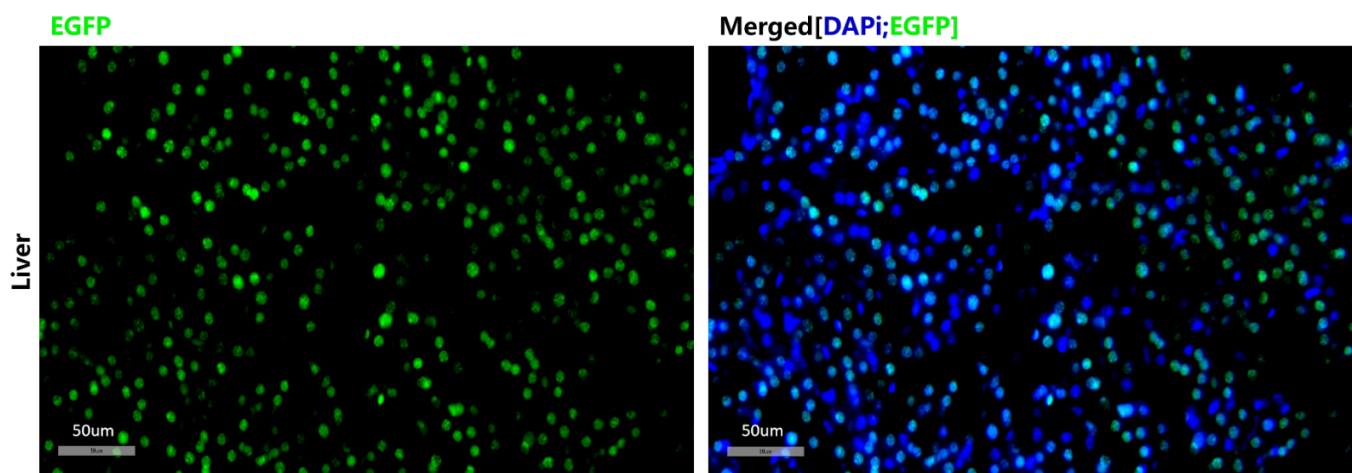


Fig1. The expression of EGFP in the liver of *Dppa3*^{Cre/+};H11^{CAG-LSL-H2B-EGFP-CAG-RSR-tdTomato/+} mouse.

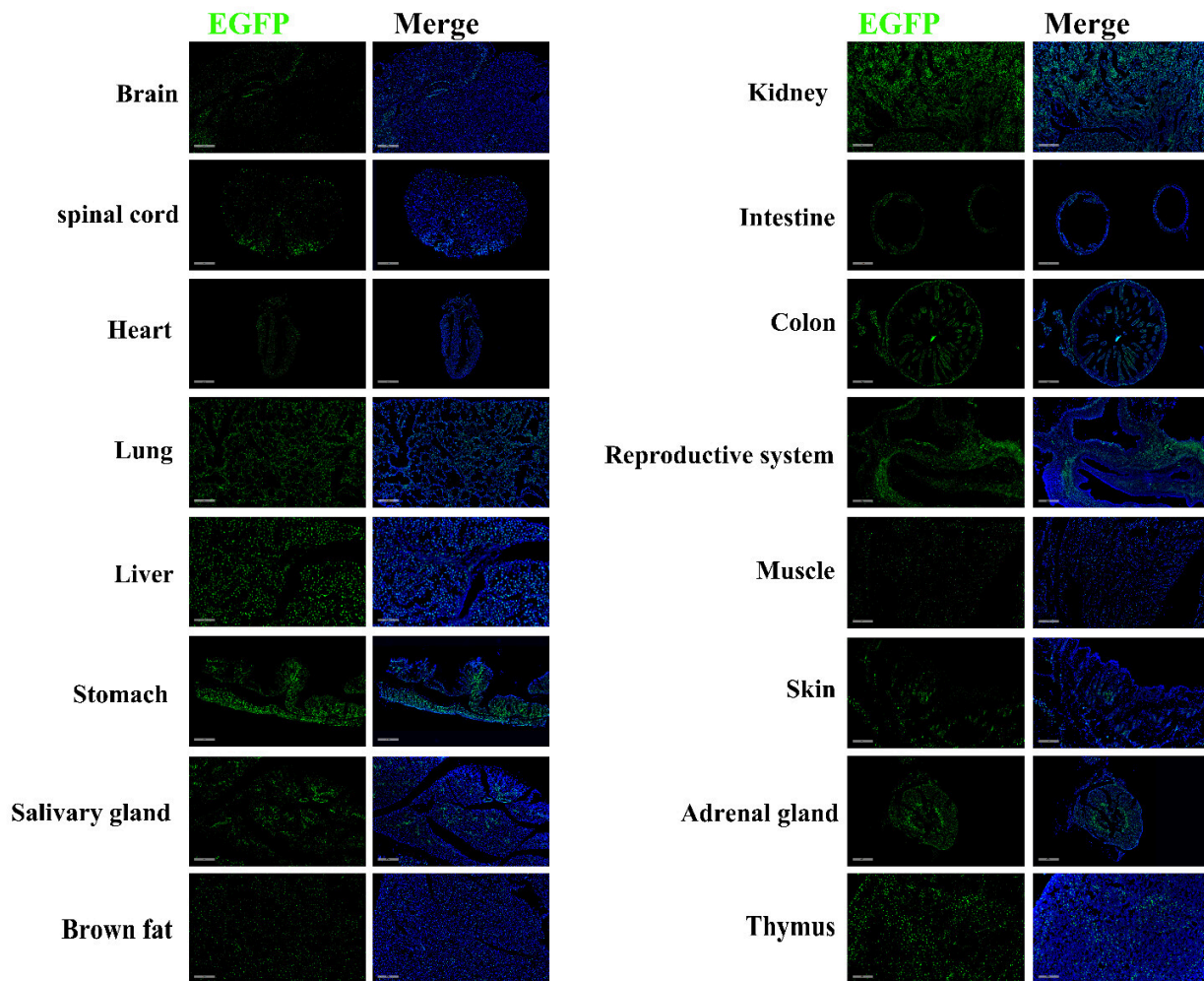


Fig2. Detection of EGFP(Green) in various tissues of *Dppa3^{Cre/+};H11^{CAG-LSL-H2B-EGFP-CAG-RSR-tdTomato/+}* mouse. Tissue distribution of EGFP expression: Brain, spinal cord, heart, lung, liver, stomach, salivary gland, brown fat, kidney, large intestine, colon, reproductive system, muscle, skin, adrenal gland, thymus. (21-days old, female) (For more detailed information please contact our technical advisor.)