

# CT26-hTROP2

## 品系基本信息

目录号 NM-S24A-TM38

细胞系名称 CT26-hTROP2

品系状态 成瘤性验证完成

品系描述 TROP2基因人源化的CT26结肠癌细胞系

\*使用本品系发表的文献需注明: CT26-hTROP2 cell line (Cat. NO. NM-S24A-TM38) was purchased from Shanghai Model Organisms Center, Inc..

## 验证数据

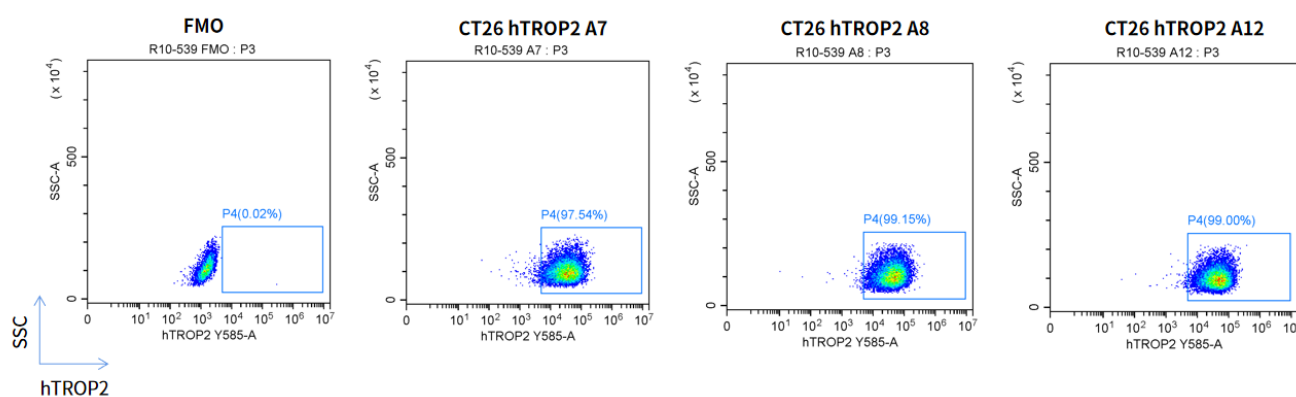


Fig1. hTROP2 expression on *in vitro* cultured cells of CT26-hTROP2.

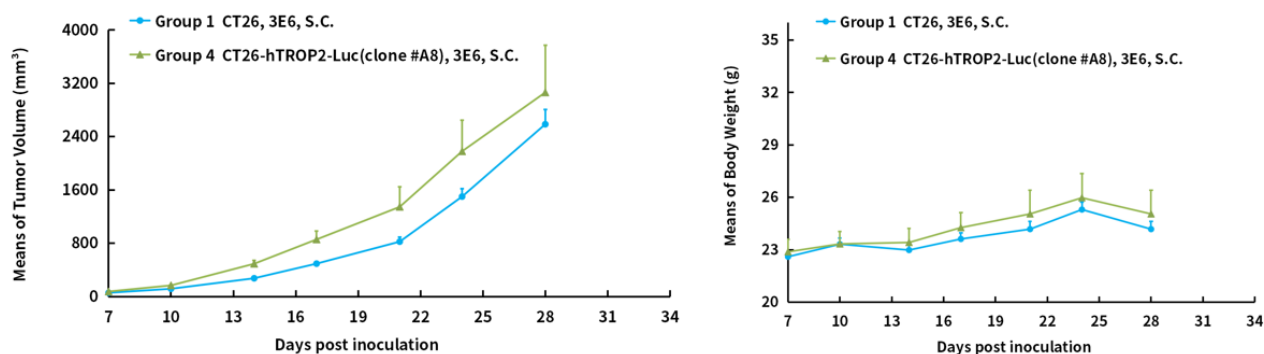
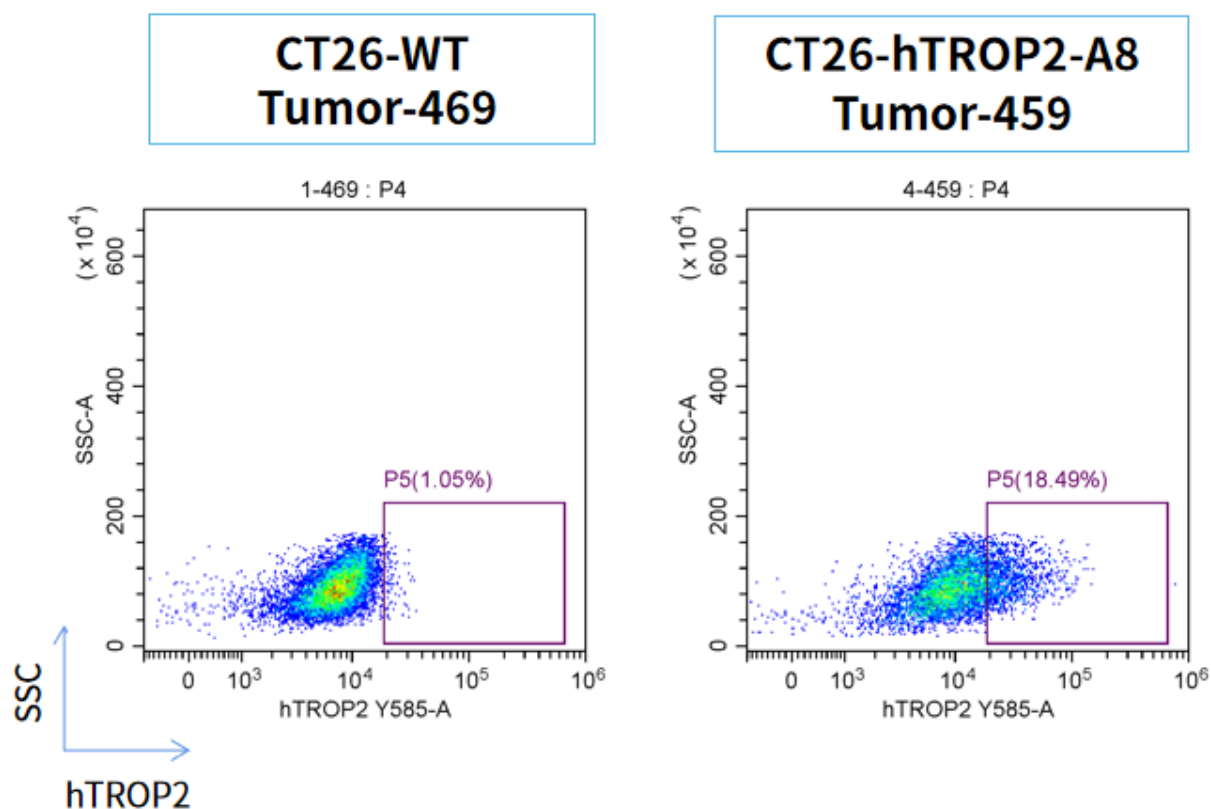


Fig2. *In vivo* validation of CT26-hTROP2 in BALB/c mice.

BALB/c mice were inoculated with CT26-hTROP2 subcutaneously at  $3 \times 10^6$  cells/mouse inoculum for tumor development.



**Fig3. hTROP2 expression in tumors after *in vivo* growth of CT26-hTROP2 in wild type BALB/c mice.**

The tumors were collected at day 15 post tumor cell inoculation.