

hCDCP1(2)

利用同源重组，将小鼠Cdcp1基因进行人源化修饰。

品系全名	C57BL/6JSmo- <i>Cdcp1</i> ^{tm1(hCDCP1)Smoc}
目录号	NM-HU-252004
品系状态	精子冻存

基因信息

基因名 Cdcp1	基因曾用名	AA409659; 9030022E12Rik; E030027H19Rik
	NCBI ID	109332
	MGI ID	2442010
	Ensembl ID	ENSMUSG00000035498
	人类同源基因	CDCP1

品系描述

利用同源重组，将小鼠Cdcp1基因进行人源化修饰。

*使用本品系发表的文献需注明: hCDCP1(2) mice (Cat. NO. NM-HU-252004) were purchased from Shanghai Model Organisms Center, Inc..

验证数据

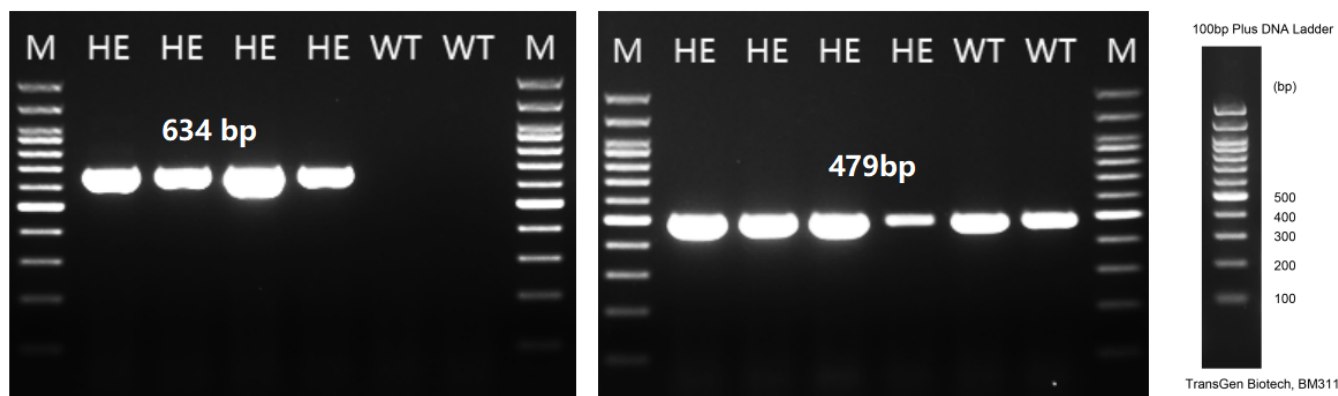


Fig.1 Detection of *CDCP1* expression in colon by RT-PCR. Colon RNA was extracted from male 6-

week-old WT mice (n=2) and heterozygous hCDCP1(2) knockin mice (n=4), then cDNA libraries were synthesized by reverse transcription, followed by PCR with specific mRNA primers. Mouse *Cdcp1* mRNA (479 bp) in both wild-type C57BL/6 mice and heterozygous hCDCP1(2) knockin mice. Human *CDCP1* mRNA (634 bp) was detectable only in heterozygous hCDCP1(2) knockin mice but not in wild-type mice.

Abbr. M, marker; HE, heterozygous; WT, wild type.

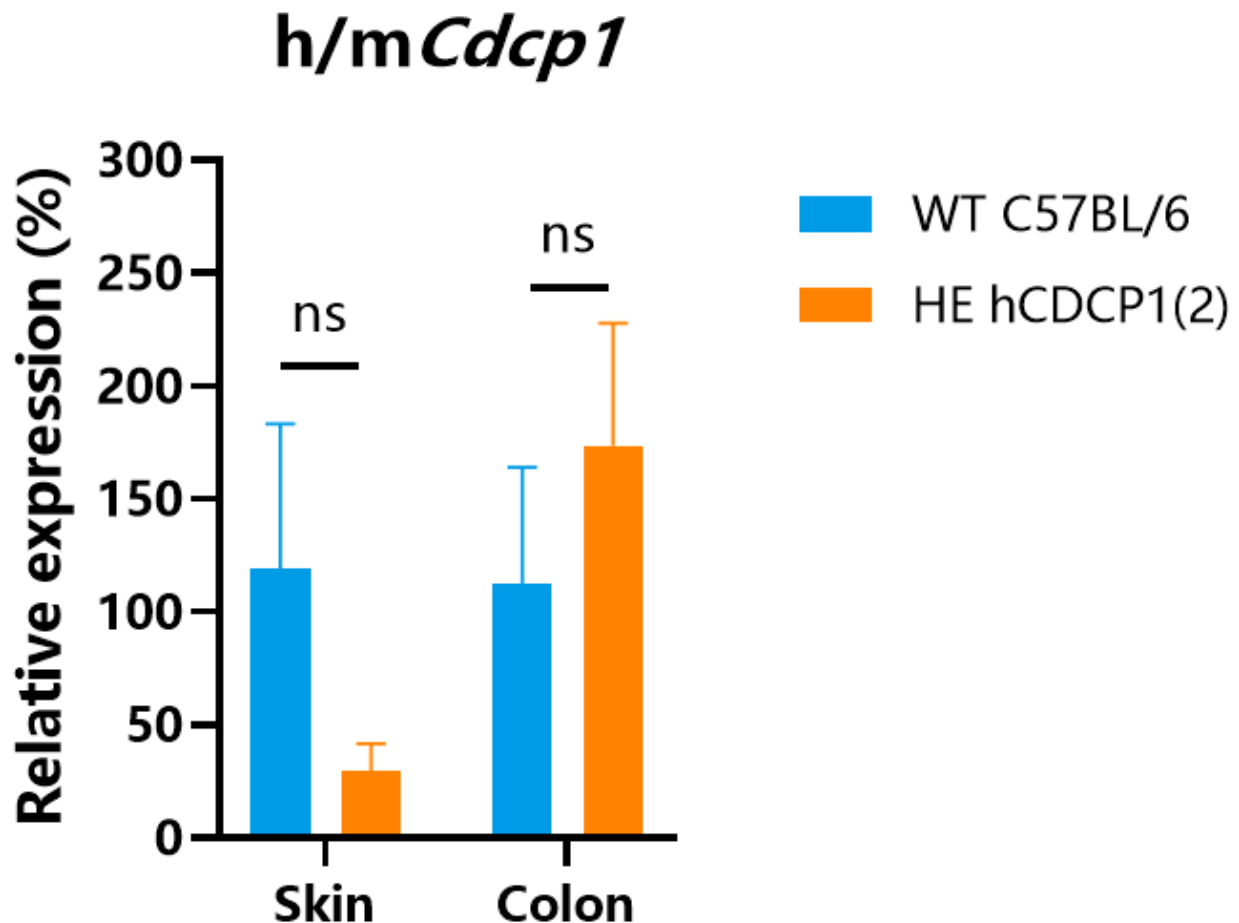


Fig.2 Detection of CDCP1 expression in skin and colon by qPCR. Skin and colon RNA were harvested from male 6-week-old WT mice (n=2) and heterozygous hCDCP1(2) knockin mice (n=4), then cDNA libraries were synthesized by reverse transcription, followed by qPCR with h/m *Cdcp1* and mouse *Gapdh* primers. Relative expression represents the h/m *Cdcp1* mRNA level relative to its average expression in WT mice. (Mean±SEM, T-test, ns, no significance).

Abbr. HE, heterozygous; WT, wild type.

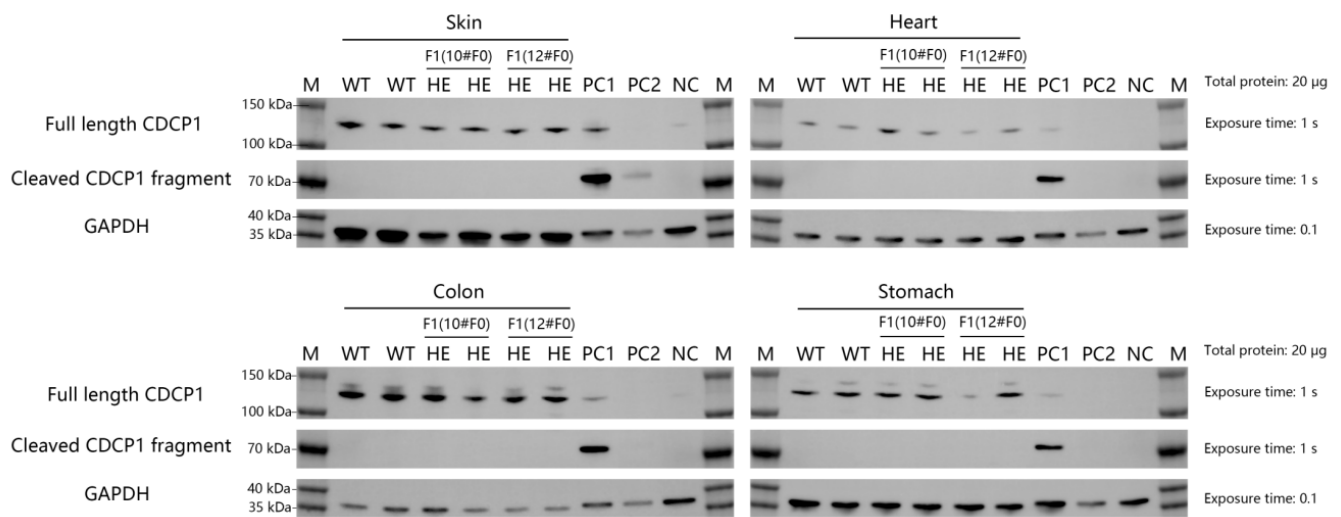


Fig.3 Detection of CDCP1 expression in hCDCP1 knockin mice by WB. Tissues lysates were collected from male 6-week-old WT mice (n=2) and heterozygous hCDCP1 mice (n=4), and then analyzed by western blot with anti-CDCP1 antibody. 20 µg of total proteins were loaded for western blotting analysis. The positive control used are HCT116 (PC1) and HT29 (PC2) cells, and the negative control used is MCF-7 cells. The full length CDCP1 protein (~140KD) is detectable in skin, heart, colon and stomach tissues in both WT mice and heterozygous hCDCP1(2) mice, as the antibody is cross-reactive between human and mouse CDCP1. The cleaved CDCP1 fragment (~70KD) is not detectable in normal tissues from both WT mice and heterozygous hCDCP1(2) mice.

Abbr. M, marker; HE, heterozygous; WT, wild type; PC, positive control; NC, negative control.