

HLA-A3.1/B2M

利用同源重组，将小鼠B2m基因进行人源化修饰。

品系全名	C57BL/6JSmo- <i>B2m</i> ^{tm1(hB2M-linker-HLA-A*0301/H2-D1)Smoc}
目录号	NM-HU-250773
品系状态	活体

基因信息

基因名 B2M	基因曾用名	y-m11; beta2m; beta2-m
	NCBI ID	12010
	MGI ID	88127
	Ensembl ID	ENSMUSG00000060802
	人类同源基因	B2M

品系描述

利用同源重组，将小鼠B2m基因进行人源化修饰。

*使用本品系发表的文献需注明: HLA-A3.1/B2M mice (Cat. NO. NM-HU-250773) were purchased from Shanghai Model Organisms Center, Inc..

验证数据

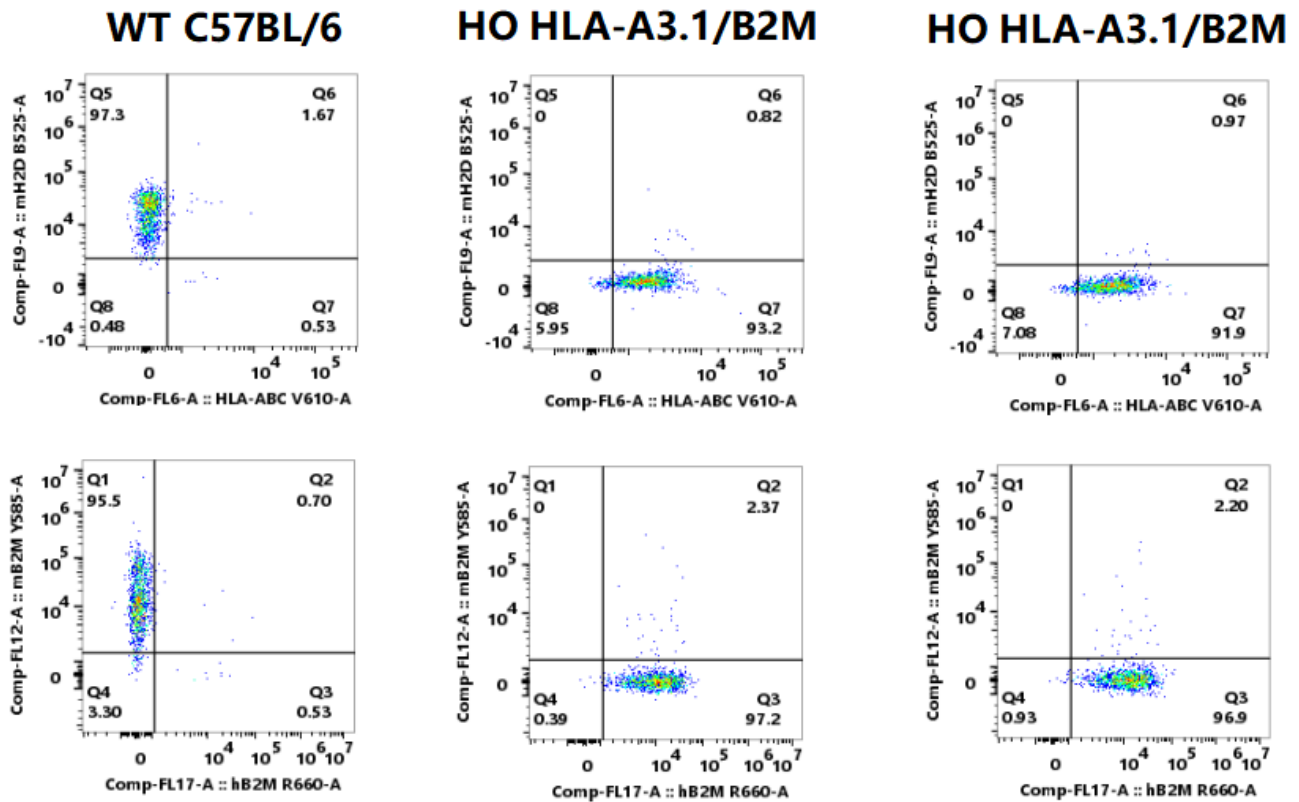


Fig.1 Detection of hB2M and HLA-A,B,C expression on leukocytes in blood of WT C57BL/6 mice and HLA-A3.1/B2M mice by FACS. Leukocytes were collected from wild-type C57BL/6 mice (female, 6 weeks old) and HLA-A3.1/B2M humanized mice (female, 6 weeks old), and analyzed by flow cytometry with anti-HLA-ABC, anti-mH2D, anti-mB2M, and anti-hB2M. hB2M and HLA-A,B,C were exclusively detectable in HLA-A3.1/B2M humanized mice but not in wild-type mice. hB2M and HLA-A,B,C were exclusively detectable on Leukocytes in hB2M humanized mice, whereas mB2M and mH2-D were exclusively detectable on Leukocytes in wild-type C57BL/6 mice.

Abbr. HO, homozygous; WT, wild type.

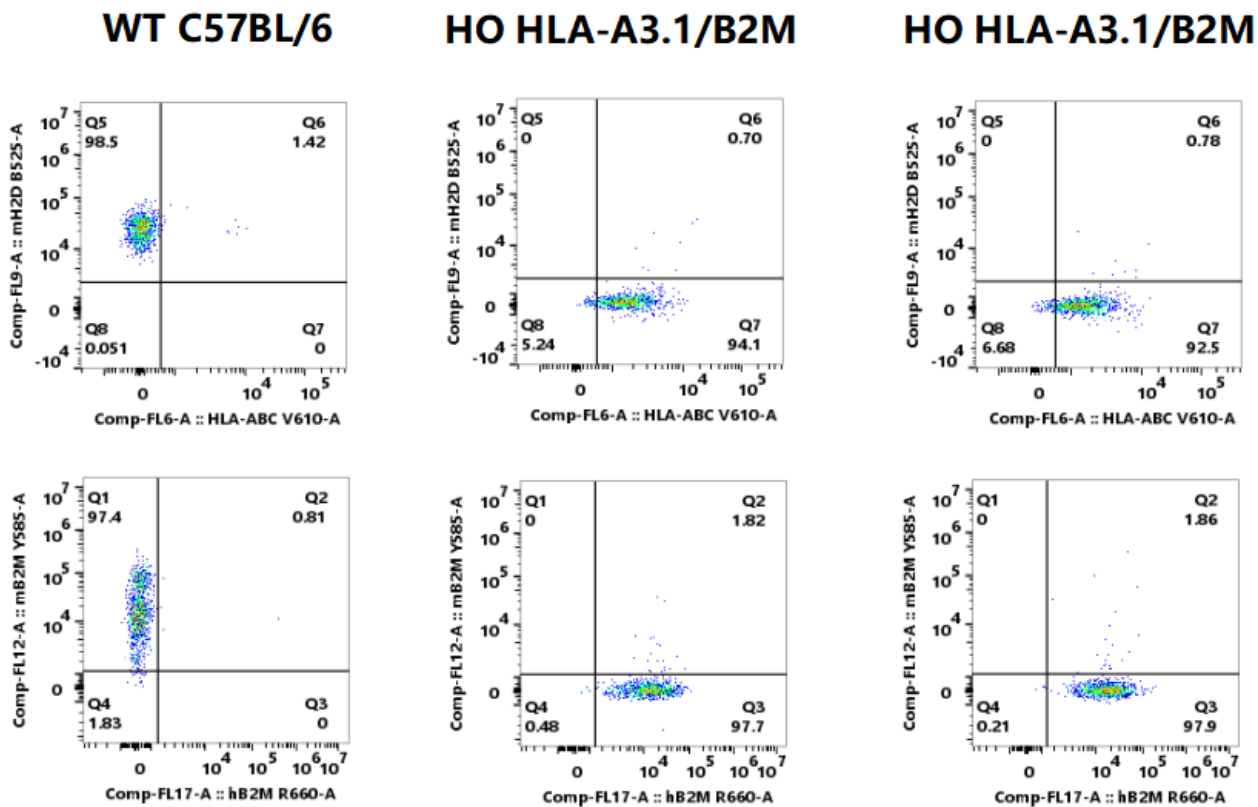


Fig.2 Detection of hB2M and HLA-A,B,C expression on leukocytes in spleen of WT C57BL/6 mice and HLA-A3.1/B2M mice by FACS. Leukocytes were collected from wild-type C57BL/6 mice (female, 6 weeks old) and HLA-A3.1/B2M humanized mice (female, 6 weeks old), and analyzed by flow cytometry with anti-HLA-ABC, anti-mH2D, anti-mB2M, and anti-hB2M. hB2M and HLA-A,B,C were exclusively detectable in HLA-A3.1/B2M humanized mice but not in wild-type mice. hB2M and HLA-A,B,C were exclusively detectable on Leukocytes in hB2M humanized mice, whereas mB2M and mH2-D were exclusively detectable on Leukocytes in wild-type C57BL/6 mice.

Abbr. HO, homozygous; WT, wild type.

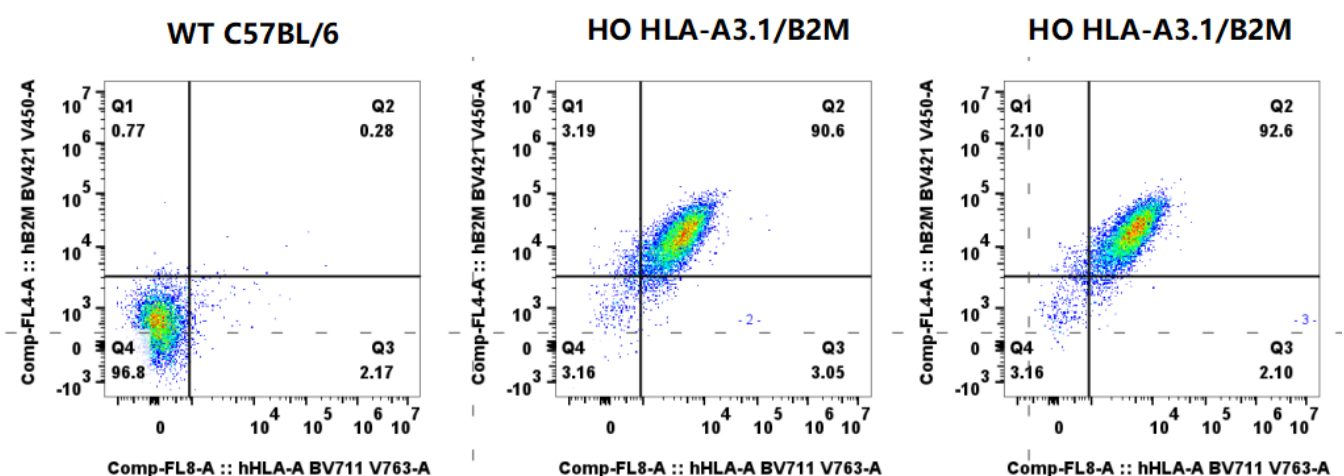


Fig.3 Detection of HLA-A expression on leukocytes in blood of WT C57BL/6 mice and HLA-A3.1/B2M mice by FACS. Leukocytes were collected from wild-type C57BL/6 mice (female, 11 weeks old) and HLA-A3.1/B2M humanized mice (female, 11 weeks old), and analyzed by flow

cytometry with anti-HLA-A and anti-mB2M. HLA-A was exclusively detectable in HLA-A3.1/B2M humanized mice but not in wild-type mice.

Abbr. HO, homozygous; WT, wild type.

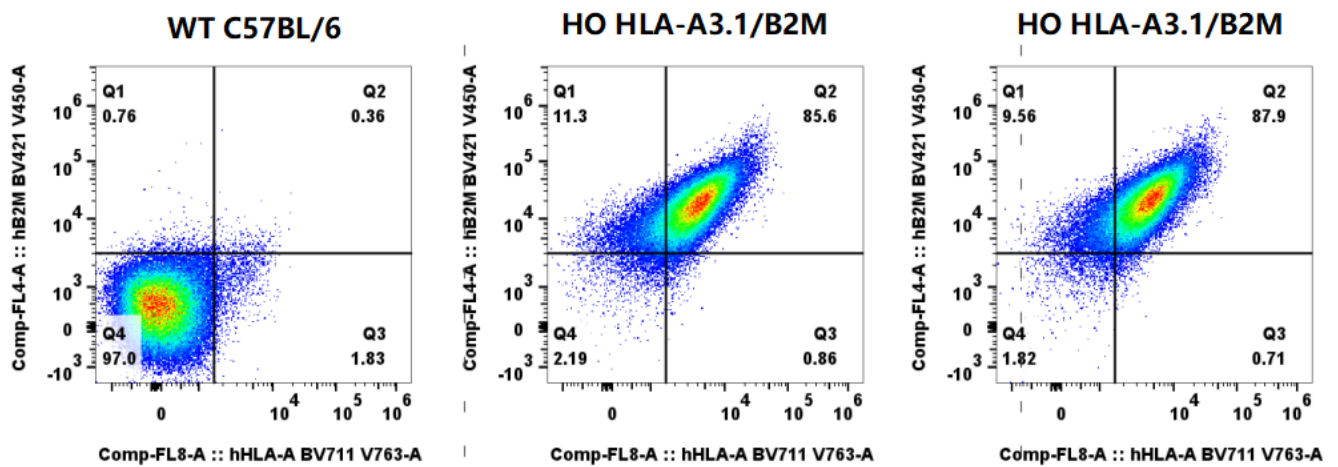


Fig.4 Detection of HLA-A expression on leukocytes in spleen of WT C57BL/6 mice and HLA-A3.1/B2M mice by FACS. Leukocytes were collected from wild-type C57BL/6 mice (female, 11 weeks old) and HLA-A3.1/B2M humanized mice (female, 11 weeks old), and analyzed by flow cytometry with anti-HLA-A and anti-mB2M. HLA-A was exclusively detectable in HLA-A3.1/B2M humanized mice but not in wild-type mice.

Abbr. HO, homozygous; WT, wild type.