

# Hand2-2A-EGFP-2A-CreERT2

将P2A-EGFP-T2A-CreERT2插入到小鼠Hand2基因终止密码子处。

品系全名	C57BL/6JSm0- <i>Hand2</i> <sup>em1(P2A-EGFP-T2A-CreERT2)Smoc</sup>
目录号	NM-KI-250149
品系状态	精子冻存

## 基因信息

基因名 Hand2	基因曾用名	Hed; Th2; dHAND; Ehand2; Thing2; bHLHa26; AI225906; AI661148
	NCBI ID	<a href="#">15111</a>
	MGI ID	<a href="#">103580</a>
	Ensembl ID	<a href="#">ENSMUSG00000038193</a>
	人类同源基因	HAND2

## 品系描述

将P2A-EGFP-T2A-CreERT2插入到小鼠Hand2基因终止密码子处。

\*使用本品系发表的文献需注明: Hand2-2A-EGFP-2A-CreERT2 mice (Cat. NO. NM-KI-250149) were purchased from Shanghai Model Organisms Center, Inc..

## 验证数据

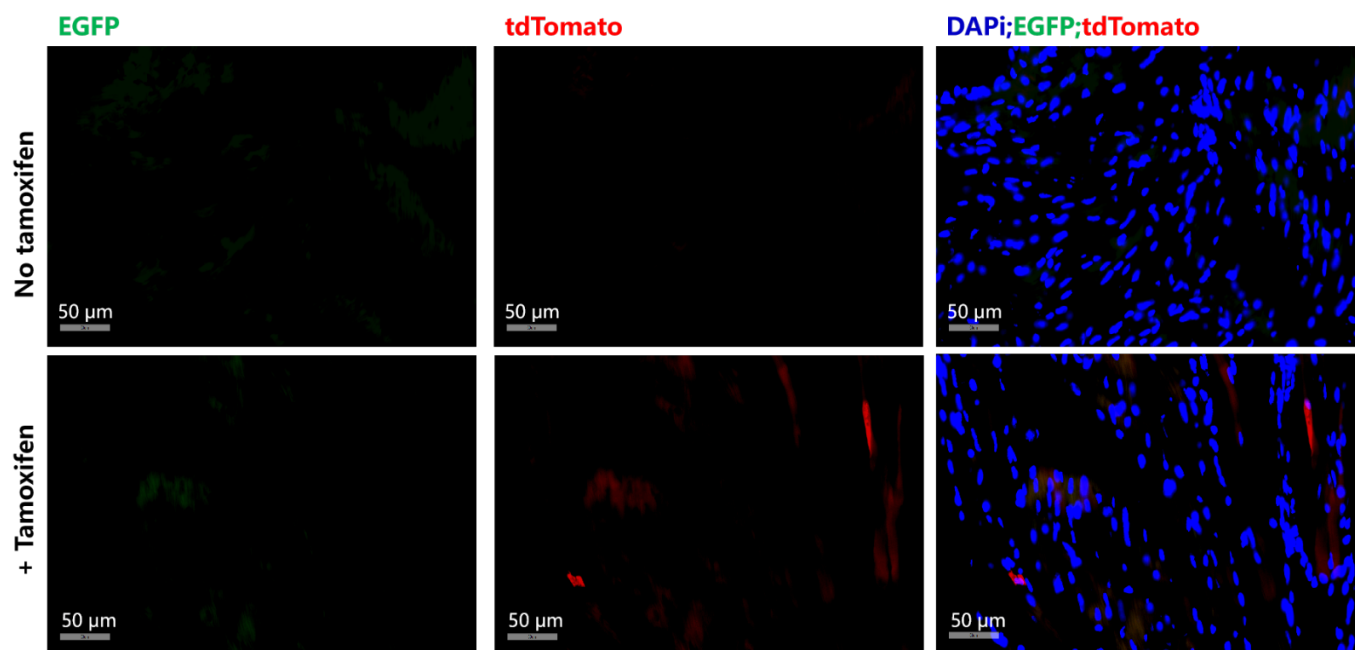


Fig1. CreERT2 mediated recombination in heart of *Hand2*<sup>EGFP-2A-CreERT2/+</sup>; *Rosa26*<sup>tdTomato/+</sup> mouse.

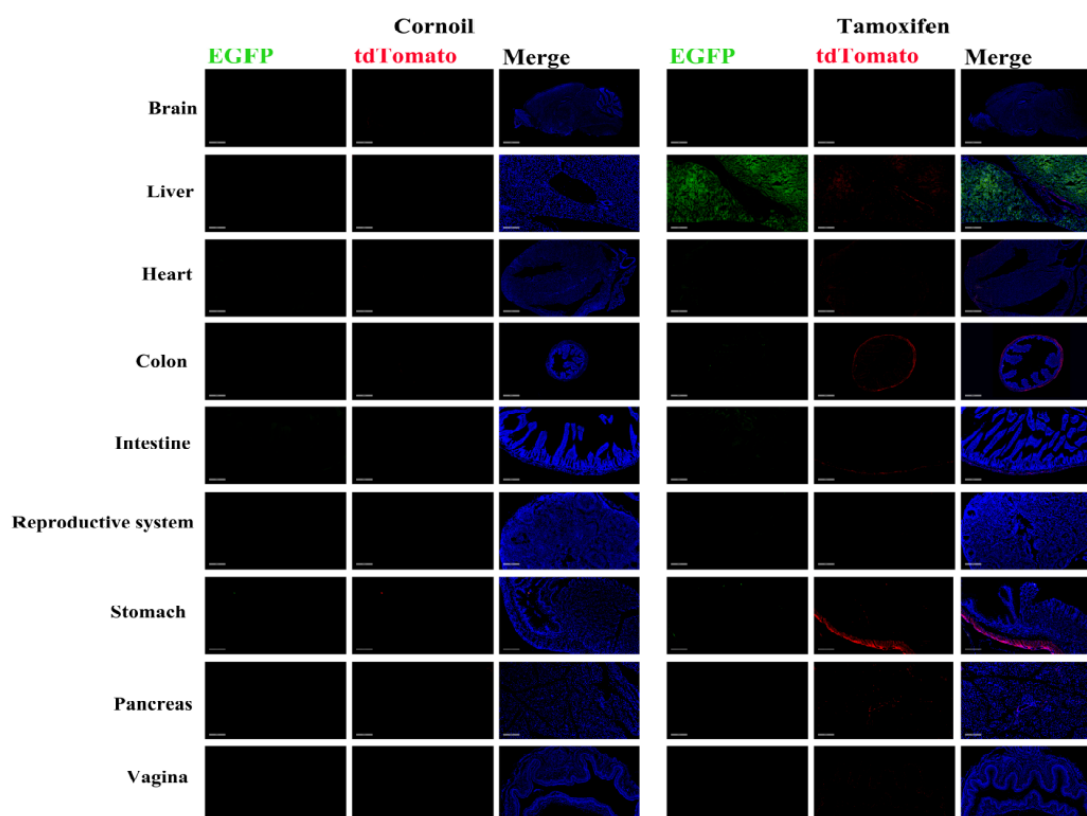


Fig2. Detection of tdTomato(red) and EGFP(green) in various tissues of *Hand2*<sup>EGFP-2A-CreERT2/+</sup>; *Rosa26*<sup>tdTomato/+</sup> mouse.

Following tamoxifen induction, tdTomato expression was observed in the heart, liver, large intestine, small intestine, stomach, pancreas, and vagina.

---

EGFP expression was detected in the liver, large intestine, and small intestine.

(51-days old, female) (For more detailed information please contact our technical advisor.)

---