

# hINHBE

利用同源重组，将小鼠Inhbe基因进行人源化修饰。

品系全名	C57BL/6JSmo- <i>Inhbe</i> <sup>tm1(hINHBE)Smoc</sup>
目录号	NM-HU-233512
品系状态	活体

## 基因信息

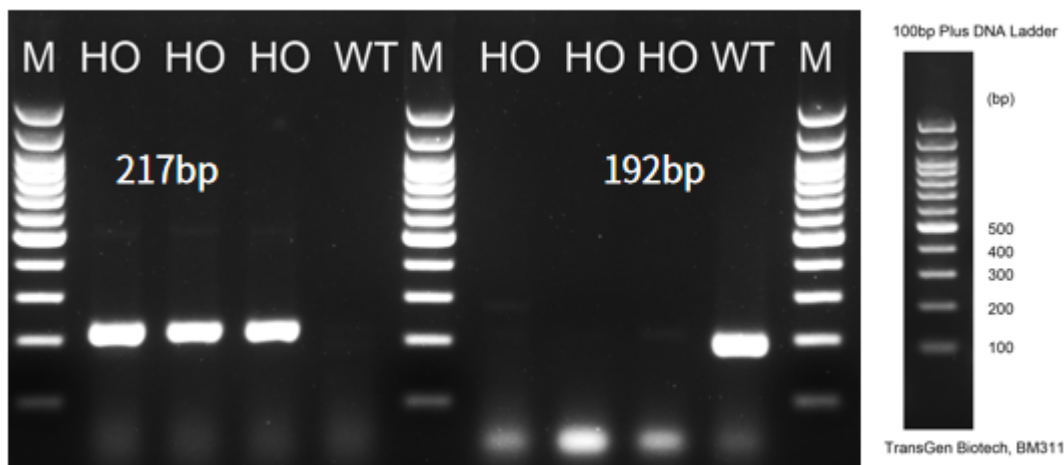
基因名 Inhbe	基因曾用名	-
	NCBI ID	<a href="#">16326</a>
	MGI ID	<a href="#">109269</a>
	Ensembl ID	<a href="#">ENSMUSG00000047492</a>
	人类同源基因	INHBE

## 品系描述

利用同源重组，将小鼠Inhbe基因进行人源化修饰。

\*使用本品系发表的文献需注明: hINHBE mice (Cat. NO. NM-HU-233512) were purchased from Shanghai Model Organisms Center, Inc..

## 验证数据

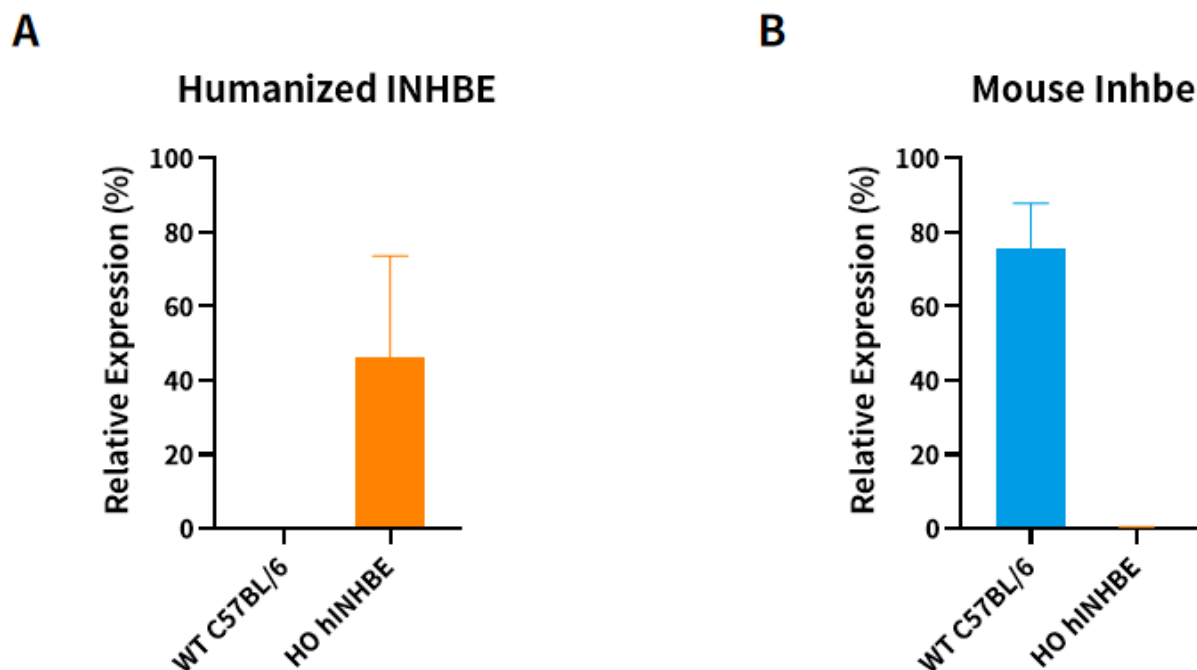


**Fig.1 Detection of *INHBE* expression in liver by RT-PCR.**

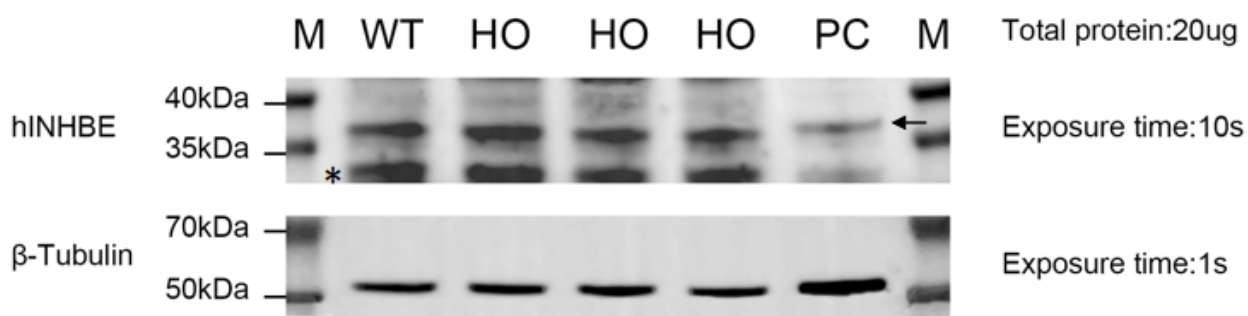
Wild type: only one band at 192 bp with primers F1/R1 (mInhbe);

Homozygous: only one band at 217 bp with primers F2/R2 (hINHBE).

Abbr. M, DNA marker; HO, homozygous; WT, wild type.



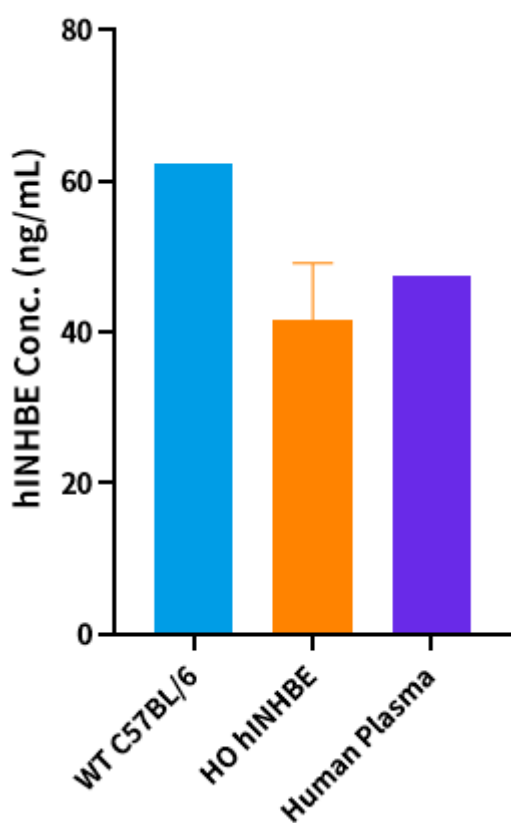
**Fig.2 Detection of *INHBE* and *Inhbe* expression in liver by qPCR.**



**Fig.3 Detection of human INHBE expression in liver in hINHBE knockin mice by WB.**

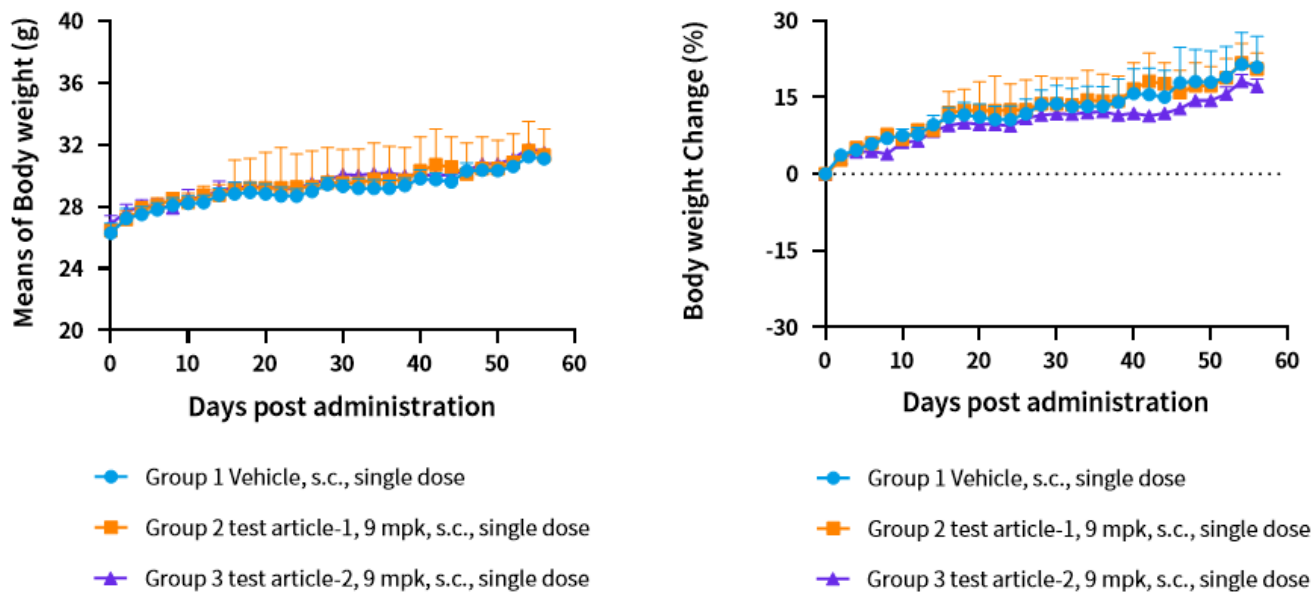
Abbr. M, marker; WT, wild type; HO, homozygous; PC, positive control, Hep G2 cells.

Note. The anti-human INHBE Antibody cross-reacted with mouse INHBE and humanized INHBE. Arrow indicates expected molecular weight and asterisk indicates a nonspecific band.

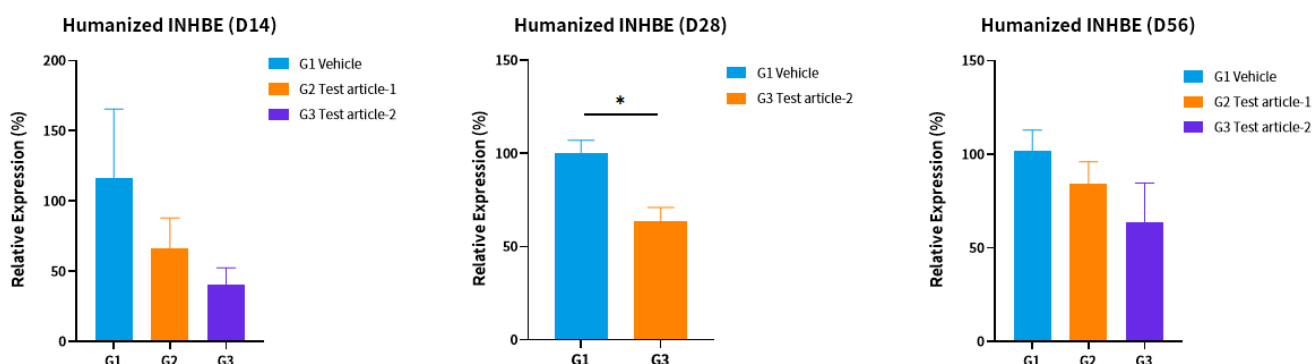


**Fig.4 Detection of hINHBE expression in serum by ELISA (n=3).**

Note. The human INHBE Elisa kit cross-reacted with mouse INHBE and humanized INHBE.

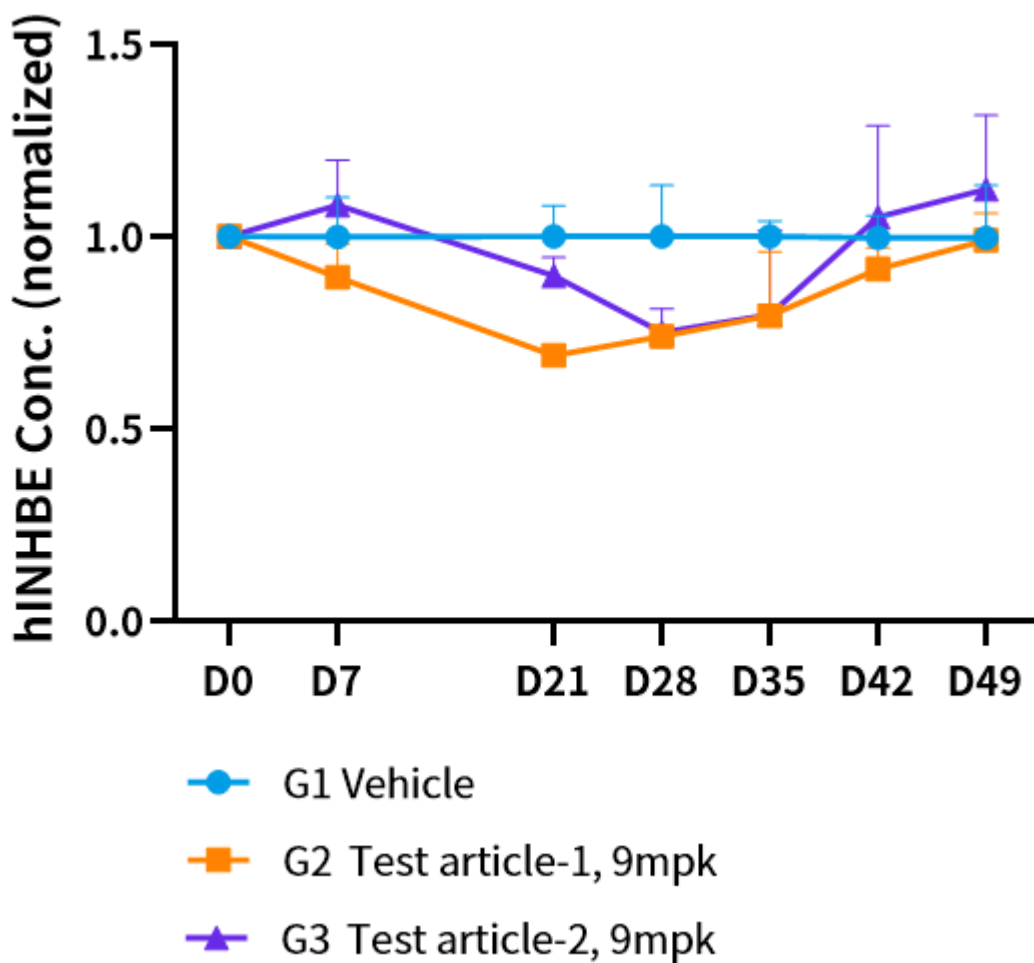


**Fig.5 Body weight and body weight change of hINHBE mice (n=9 of G1/G3, n=5 of G2).**



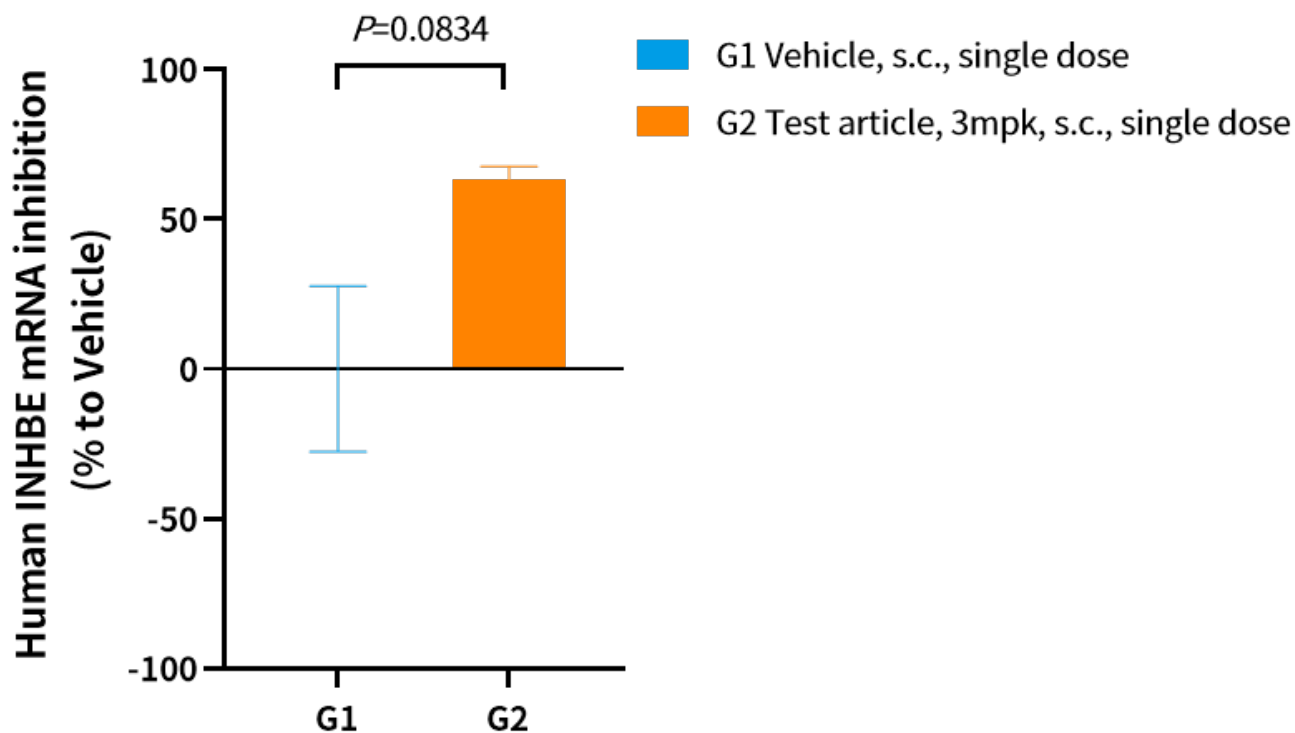
**Fig.6 Detection of INHBE expression in liver by qPCR.**

hINHBE mice were randomly divided into 3 groups, and were treated with test article (from a collaborator). Mice were sacrificed at D14, 28 or 56 and the liver was collected to detect the expression level of human INHBE mRNA by qPCR. (Each value in G1, G2 and G3 represents the mRNA level relative to the value in G1(n=3). Mean  $\pm$  SEM. t-test, \*p < 0.05



**Fig.7 Detection of INHBE expression in serum by ELISA at different days point posting dosing.**

hINHBE mice were randomly divided into 3 groups, and were treated with test article (from a collaborator). Serum was collected to detect the expression level of human INHBE by ELISA. Mean  $\pm$  SEM.



**Fig.8 The inhibition of INHBE expression by test article in hINHBE knccokin mice.**

hINHBE mice (male, 11 weeks old) were randomly divided into 2 groups and were treated with vehicle or test article (a nucleic acid drug from a collaborator), respectively. The livers were collected at D14 after a single dosing to detect the mRNA expression of human INHBE by qPCR. (Each value in G2 represents the mRNA inhibition efficiency relative to the value in G1. (n=5 of G1, n=6 of G2). Mean  $\pm$  SEM, Welch t-test). (Data from a collaborator)