

hTL1A(BALB/c)

品系全名	BALB/cJSm ^o - <i>Tnfsf15</i> ^{tm1(hTNFSF15)Smoc}
目录号	NM-HU-220602
品系状态	胚胎冻存

基因信息

基因名 Tnfsf15	基因曾用名	TL1; TL1a; Vegi; Tnlg1b
	NCBI ID	326623
	MGI ID	2180140
	Ensembl ID	ENSMUSG00000050395
	人类同源基因	TNFSF15

品系描述

利用同源重组，将小鼠*Tnfsf15* 基因进行人源化修饰。

*使用本品系发表的文献需注明: hTL1A(BALB/c) mice (Cat. NO. NM-HU-220602) were purchased from Shanghai Model Organisms Center, Inc..

验证数据

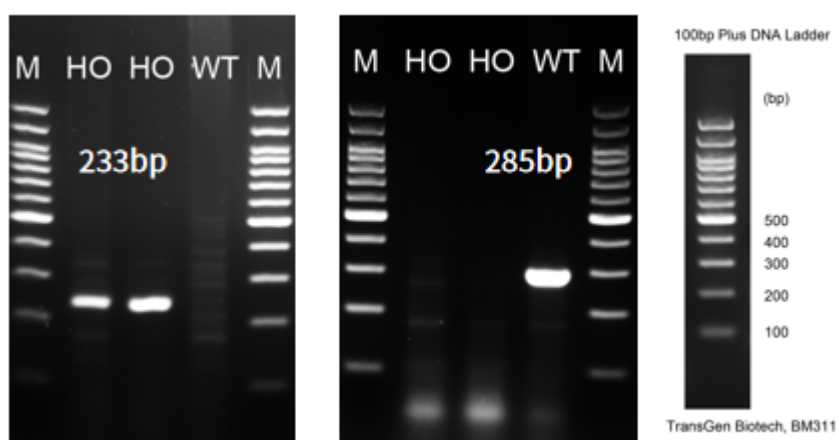


Fig.1 Detection of TL1A expression in bladder by RT-PCR.

Wild type: only one band at 285 bp with primers F1/R1 (mTL1a);

Homozygous: only one band at 233 bp with primers F2/R2 (hTL1A).

Abbr. M, DNA marker; HO, homozygous; WT, wild type.

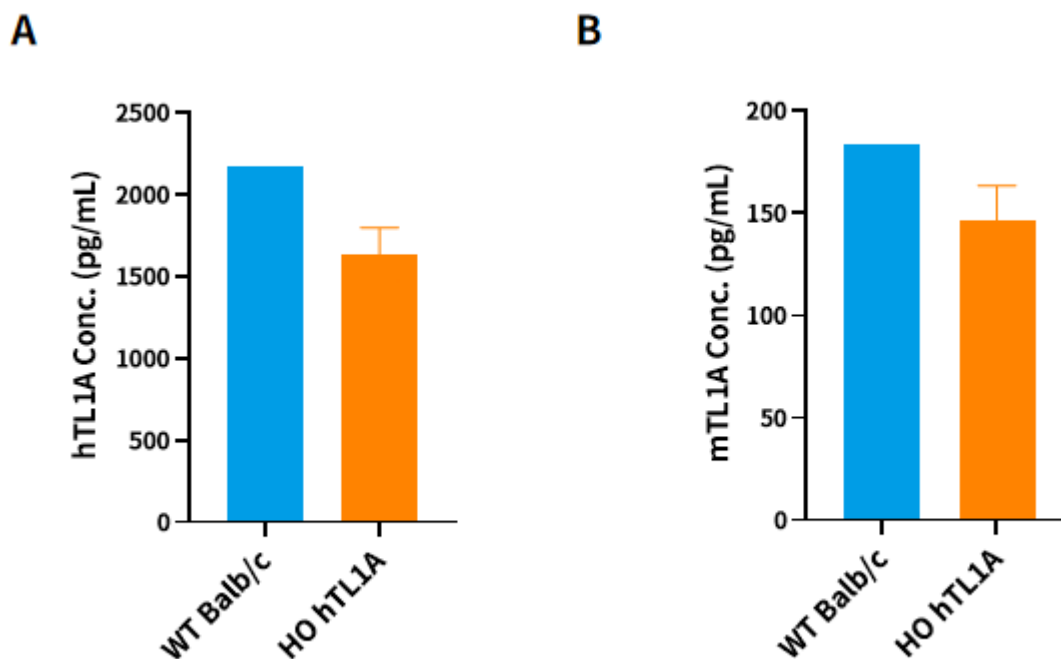


Fig.2 Detection of hTL1A (A) and mTL1A (B) expression in lung homogenate by ELISA (n=3).

Abbr. HO, homozygous; WT, wild type.

Note. hTL1A and BALB/c mice were i.p. injected with LPS for 6h. The anti-human and mouse TL1A kit cross-reacted with mTL1A and humanized TL1A.

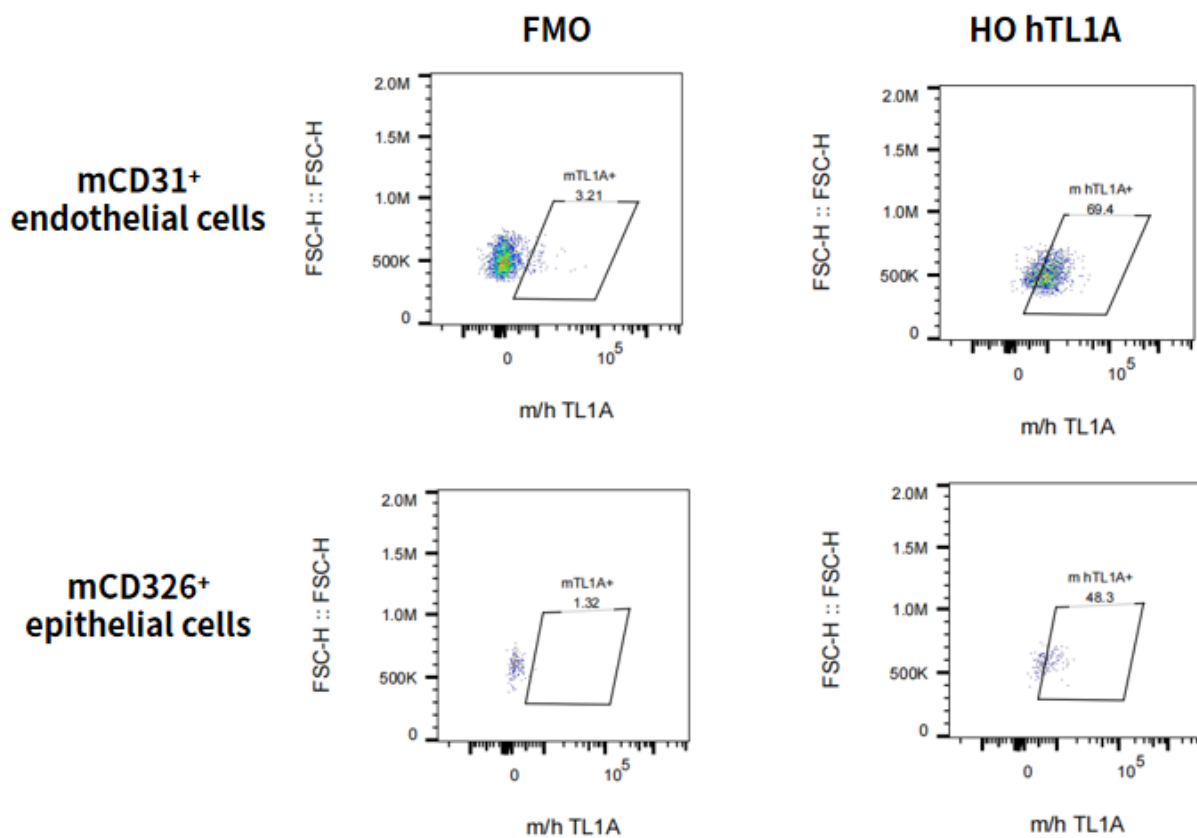


Fig.3 Detection of TL1A expression on endothelial and epithelial cells in lung in hTL1A mice

Note. The hom hTL1A mice were stimulated with LPS in vivo.