

BALB/c Nude

裸鼠 BALB/c Nude

品系全名	BALB/c Nude
目录号	SM-014
品系状态	活体

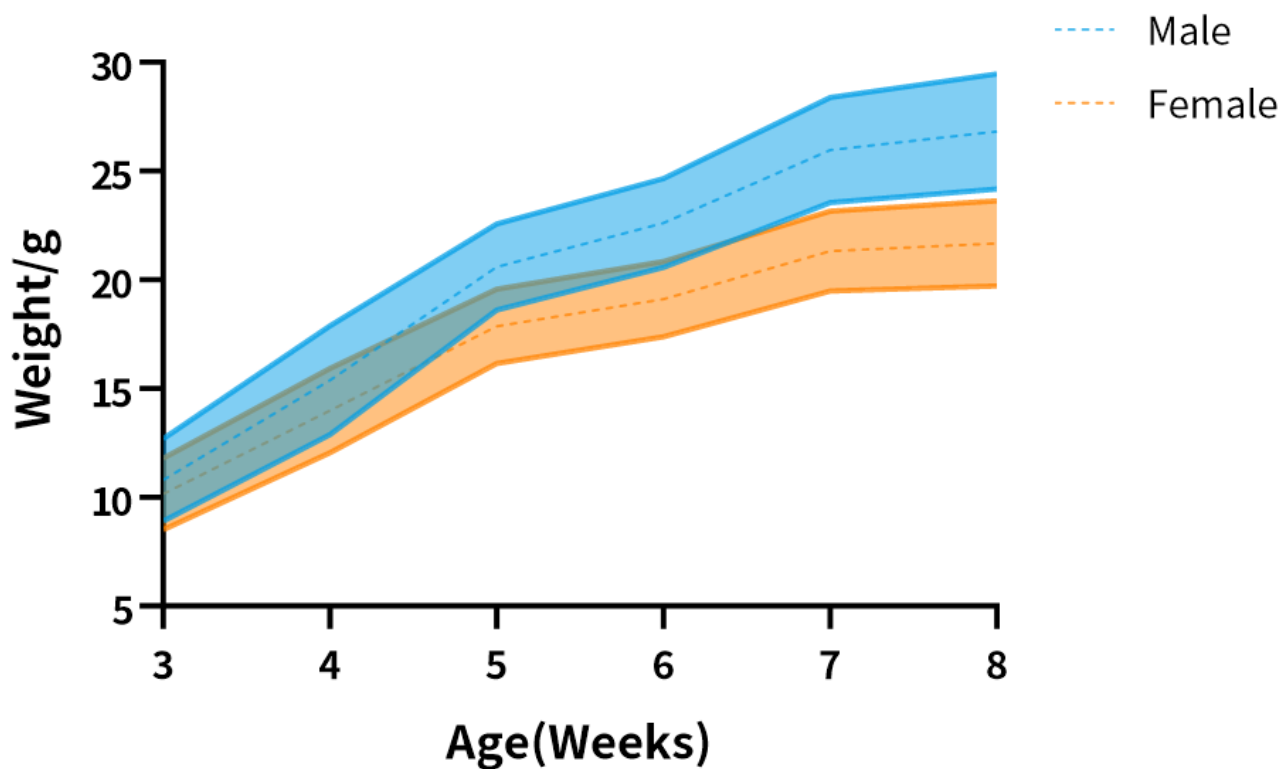
基因信息

品系描述

BALB/c背景下Foxn1基因纯合突变，裸鼠是快速生长的肿瘤细胞系的理想宿主，但部分细胞系在裸鼠上难以成瘤，如血液瘤细胞系、乳腺癌细胞系、原代细胞等。裸鼠无毛，更容易直观的评估皮下肿瘤的生长情况。
*使用本品系发表的文献需注明: BALB/c Nude mice (Cat. NO. SM-014) were purchased from Shanghai Model Organisms Center, Inc..

验证数据

BALB/c Nude Body Weight Growth Curve



	3W	4W	5W	6W	7W	8W
Male	10.79±1.9	15.39±2.49	20.6±1.99	22.62±2.05	25.97±2.42	26.83±1.65
Female	10.16±1.66	13.98±1.95	17.86±1.72	19.12±1.73	21.33±1.83	21.68±1.37

Fig1. Body weight growth curve of BALB/c Nude (n=780)

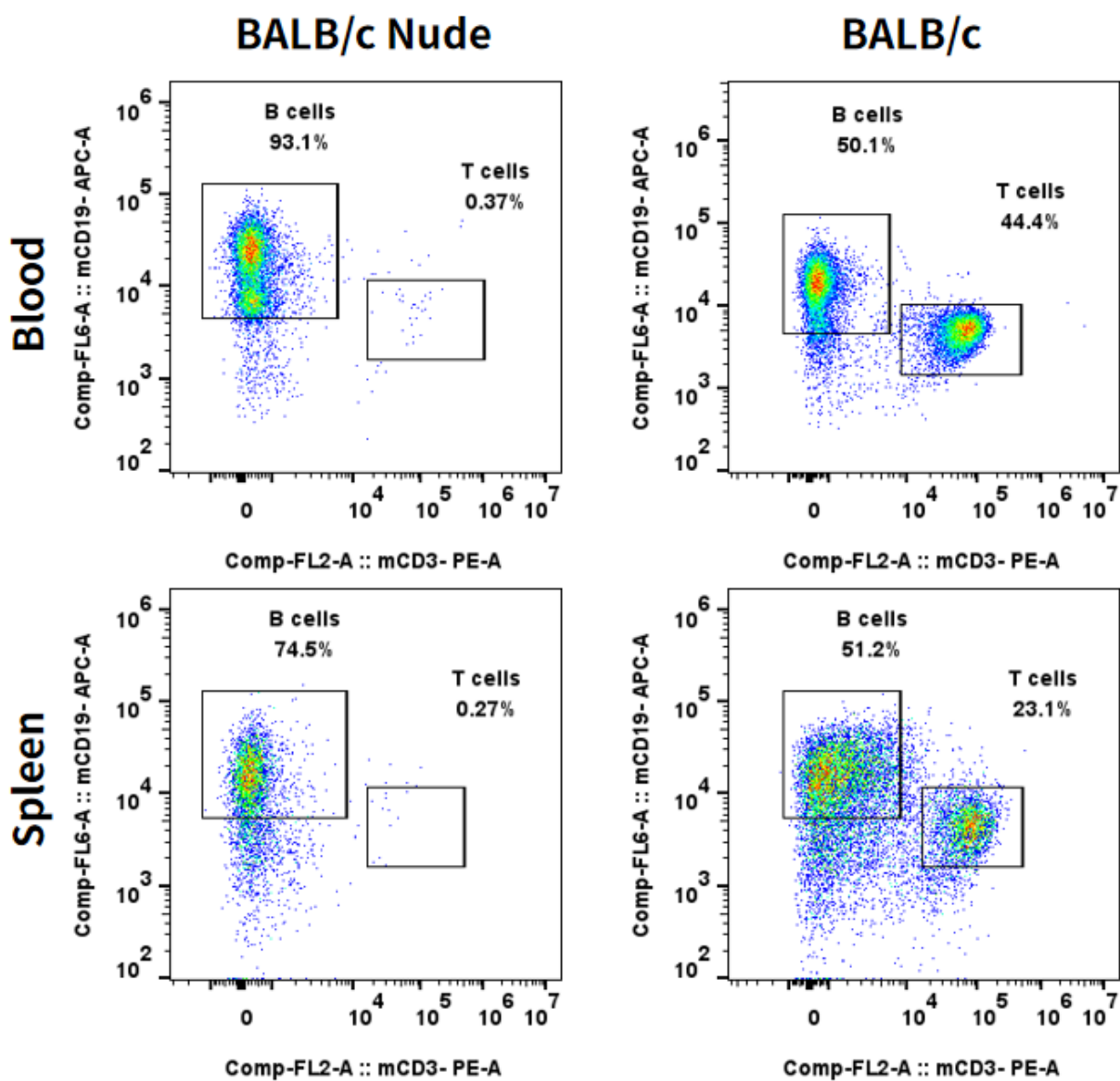


Fig2. Complete deletion of T, B cells of BALB/c Nude.

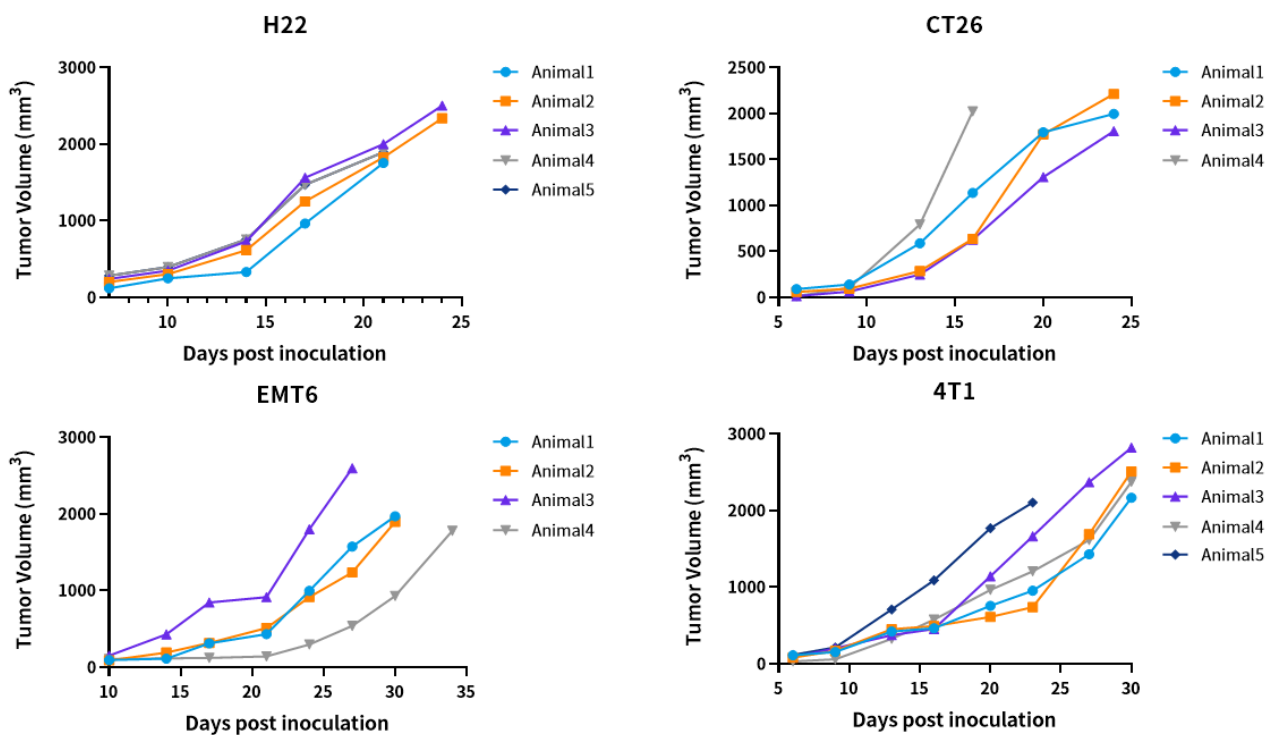


Fig3. Subcutaneous xenograft tumor growth in BALB/c Nude.

Parameter	Units	BALB/c Nude; Male	BALB/c Nude; Female
		8-10 weeks; n=10	8-10 weeks; n=10
WBC	10 ³ cells/ μ L	4.31 \pm 0.62	3.58 \pm 0.41
RBC	10 ⁶ cells/ μ L	10.38 \pm 0.24	10.33 \pm 0.10
HGB	g/dL	16.31 \pm 0.33	16.56 \pm 0.17
HCT	%	49.14 \pm 0.99	49.72 \pm 0.54
MCV	fL	47.37 \pm 0.29	48.14 \pm 0.32
MCH	pg	15.72 \pm 0.08	16.04 \pm 0.07
MCHC	g/dL	33.19 \pm 0.12	33.32 \pm 0.13
PLT	10 ⁶ cells/ μ L	1610.89 \pm 67.43	1366.60 \pm 58.87
RDW-SD	fL	29.53 \pm 0.18	31.15 \pm 0.27
RDW-CV	%	21.36 \pm 0.32	21.76 \pm 0.17
PDW	fL	10.58 \pm 0.38	10.43 \pm 0.31
MPV	fL	8.09 \pm 0.15	7.85 \pm 0.09
P-LCR	%	15.24 \pm 1.02	13.58 \pm 0.69
PCT	%	1.30 \pm 0.05	1.07 \pm 0.06
NEUT#	10 ³ cells/ μ L	1.16 \pm 0.18	0.88 \pm 0.14
LYMPH#	10 ³ cells/ μ L	2.82 \pm 0.41	2.21 \pm 0.25
MONO#	10 ³ cells/ μ L	0.24 \pm 0.05	0.40 \pm 0.13
EO#	10 ³ cells/ μ L	0.07 \pm 0.03	0.06 \pm 0.03
BASO#	10 ³ cells/ μ L	0.02 \pm 0.01	0.06 \pm 0.03
NEUT%	%	27.41 \pm 1.87	24.88 \pm 2.80
LYMPH%	%	65.15 \pm 1.96	62.29 \pm 2.16
MONO%	%	5.34 \pm 0.68	10.29 \pm 2.02
EO%(%)	%	1.65 \pm 0.45	1.42 \pm 0.64
BASO%	%	0.45 \pm 0.28	0.74 \pm 0.45
RET#	10 ⁶ cells/ μ L	0.44 \pm 0.03	0.40 \pm 0.03
RET%	%	4.29 \pm 0.32	3.84 \pm 0.29
LFR(%)	%	49.37 \pm 1.29	50.77 \pm 1.94
MFR(%)	%	18.83 \pm 0.41	18.54 \pm 0.55
HFR(%)	%	31.80 \pm 1.00	30.69 \pm 1.62
IRF(%)	%	50.63 \pm 1.29	49.23 \pm 1.94

Fig4. Blood routine tests in BALB/c Nude.

Parameter	Units	BALB/c Nude; Male	BALB/c Nude; Female
		8-10 weeks; n=10	8-10 weeks; n=10
TP	g/L	55.30±2.10	56.80±1.16
ALB	g/L	25.00±0.91	25.20±0.61
ALP	U/L	589.10±21.37	619.60±17.17
ALT	U/L	105.60±16.13	75.60±18.24
AST	U/L	259.30±63.48	187.60±54.53
T-BIL	μmol/L	2.20±0.25	1.56±0.22
D-BIL	μmol/L	3.11±0.41	2.70±0.61
CHE	U/L	4512.10±296.95	8047.20±244.23
CRE	μmol/L	15.63±0.51	15.68±0.29
BUN	mmol/L	9.12±0.39	10.48±0.39
UA	μmol/L	258.36±27.08	230.80±33.04
TCHO	mmol/L	2.85±0.12	2.53±0.07
TG	mmol/L	1.36±0.11	1.27±0.09
HDL	mmol/L	2.69±0.16	2.07±0.21
LDL	mmol/L	1.53±0.04	1.56±0.01
NEFA	mmol/L	1.06±0.05	1.04±0.09
LDH	U/L	667.20±117.13	592.40±154.07
CK	U/L	1251.30±471.32	1089.60±604.72
Hcy	μmol/L	6.64±0.40	6.92±0.43
GLU	mmol/L	15.30±1.07	14.78±1.46
Ca	mmol/L	3.23±0.11	3.20±0.06
IP	mmol/L	3.68±0.13	3.84±0.17
Fe	μmol/L	55.89±1.99	47.92±1.84
CRP	mg/L	1.33±0.34	1.45±0.40

Fig5. Blood biochemistry in BALB/c Nude.

Table 1. BALB/c Nude xenograft cell lines

Cancer Type	Cell Lines (100+)
Breast	MCF-7/5C, MCF-7/TAM2, MCF-7/RAL2, MCF-7/RAL1, MCF-7/E2, MCF-7, MDA-MB-231, T47D, BT-20, MDA-MB-435, MCF10A, MDA-MB-435/LCC6, MCF-7LU, M4A4-LM, SUM149PT...
Lung	HCC827, NCI-H358, A549, NCI-H1299, LT391-06, SK-MES-1, Calu-3, NCI-H460, NCI-H2126, NCI-H1975, NYH, NCI-H727, GLC19...
Liver	Hep3B2.1-7, HepG2...
Prostate	LNCaP, VCaP, PC-3, LNCaPC4-2B, LAPC-4, DU145, PC-82, PC-310, PC-295, PC346-DCC-K, PC3-MM2, PC-346C...
Melanoma	SK-MEL-31, SK-MEL-28, SK-MEL-5, A-375, WM1617, WM9, G-361...
Colon	T84, HT-29, HCT116, LS174T, SW620...
Bladder	KU-19-19, URO-MSC24, URO-ASC, UROtsa, URO-MSC52, RT4...
Ovarian	TOV-21G, TOV-112D, A2780, OVCAR-3, A2780/CP70, A2780cis...
Pancreatic	BxPC-3, Capan-1, MIAPaCa-2, PANC-1, L3.6pl, HPAF-II...
Glioma	BT-40, A-172...
Kidney	786-O...
Carcinoma	A-498...
Cervical	HeLa...
Myeloma	INA-6...
Stomach	MKN28, NCI-N87, MKN45...
Adenocarcinoma	KB-C2, KB-3-1...
Others	U-251MG, Caki-1, AN3CA, HT-1080...

发表文献

[Targeting the ac4C 'Writer' NAT10 enhances pancreatic cancer immunotherapy via dual modulation of CD8+ T cells and tumor cells](#)

来源杂志: Cell Death & Disease

[Sino-C, a novel sinomenine derivative, induces cell death by disrupting cholesterol homeostasis in colorectal cancer cells](#)

来源杂志: ACTA PHARMACOLOGICA SINICA

[The lysosomal cysteine protease cathepsin L promotes stemness and multidrug resistance of non-small cell lung cancer by targeting HGF activator](#)

来源杂志: MOLECULAR AND CELLULAR BIOCHEMISTRY

[VDAC1 as prognostic marker and therapeutic target in lung adenocarcinoma: a study integrating bioinformatics and experimental validation](#)

来源杂志: Discover Oncology

[Acevaltrate as a novel ferroptosis inducer with dual targets of PCBP1/2 and GPX4 in colorectal cancer](#)

来源杂志: Signal Transduction and Targeted Therapy

[RNA target-independent non-canonical activation \(RINCA\) of Cas13 trans-nuclease activity](#)

来源杂志: Science Bulletin

[Exosome-derived circCCAR1 promotes CD8⁺T-cell dysfunction and anti-PD1 resistance in](#)

[hepatocellular carcinoma](#)

来源杂志: Molecular Cancer

[BCAA-producing Clostridium symbiosum promotes colorectal tumorigenesis through the modulation of host cholesterol metabolism](#)

来源杂志: Cell Host & Microbe

[Small extracellular vesicle-mediated miR-320e transmission promotes osteogenesis in OPLL by targeting TAK1](#)

来源杂志: Nature Communications

[Acetate utilization promotes hormone therapy resistance in prostate cancer through neuroendocrine differentiation](#)

来源杂志: DRUG RESISTANCE UPDATES

[Effect of Bioactive Black Phosphorus Nanomaterials on Cancer-Associated Fibroblast Heterogeneity in Pancreatic Cancer](#)

来源杂志: ACS Nano

[Dual Inhibition of CDK4/6 and CDK7 Suppresses Triple-Negative Breast Cancer Progression via Epigenetic Modulation of SREBP1-Regulated Cholesterol Metabolism](#)

来源杂志: Advanced Science

[Aspirin-Mediated Acetylation of SIRT1 Maintains Intestinal Immune Homeostasis](#)

来源杂志: Advanced Science

[A STT3A-dependent PD-L1 glycosylation modification mediated by GMPS drives tumor immune evasion in hepatocellular carcinoma](#)

来源杂志: CELL DEATH AND DIFFERENTIATION

[Cuproptosis and Serine Metabolism Blockade Triggered by Copper-Based Prussian Blue Nanomedicine for Enhanced Tumor Therapy](#)

来源杂志: Small

[Targeted therapy of central nervous system acute lymphoblastic leukemia with an integrin \$\alpha 6\$ -targeted self-assembling proapoptotic nanopeptide](#)

来源杂志: Engineering

[RNA-binding protein RBM24 represses colorectal tumourigenesis by stabilising PTEN mRNA](#)

来源杂志: Clinical and Translational Medicine

[Epitranscriptic regulation of HRAS by N6-methyladenosine drives tumor progression](#)

来源杂志: PROCEEDINGS OF THE NATIONAL ACADEMY OF SCIENCES OF THE UNITED STATES OF AMERICA

[APOBEC3B-driven mutations negatively regulated by P53 promote tumor progression and immunosuppressive microenvironment in prostate cancer](#)

来源杂志: MOLECULAR AND CELLULAR BIOCHEMISTRY

[Unraveling the secrets of UBE2S in endometrial cancer: Potential targets for diagnosis, prognostic assessment, and ferroptosis therapy](#)

来源杂志: CELLULAR SIGNALLING

[BRAP Promotes the Tumorigenesis of Hepatocellular Carcinoma by Corrupting Cancer Cell Cycle Regulation and Enhancing Immune Evasion](#)

来源杂志: Journal of Hepatocellular Carcinoma

[Targeting the FOSL1/IKK \$\alpha\$ positive feedback loop attenuates glioblastoma malignancy via suppression of NF- \$\kappa\$ B signaling](#)

来源杂志: Theranostics

[FOXA2/ALDOB axis modulation of fatty acid beta-oxidation influences irinotecan resistance in colorectal cancer](#)

来源杂志: BIOCHIMICA ET BIOPHYSICA ACTA-MOLECULAR CELL RESEARCH

[Multi-omics analysis identifies BUB1B as a cell cycle-related driver of bladder cancer progression](#)

来源杂志: World Journal of Surgical Oncology