

A20

品系基本信息

目录号 NM-S26A

细胞系名称 A20

品系状态 成瘤性验证中

品系描述 小鼠B细胞淋巴瘤细胞

*使用本品系发表的文献需注明: A20 cell line (Cat. NO. NM-S26A) was purchased from Shanghai Model Organisms Center, Inc..

验证数据

The A20 (A-20) is a BALB/c B cell lymphoma line derived from a spontaneous reticulum cell neoplasm found in an old BALB/cAnN mouse.

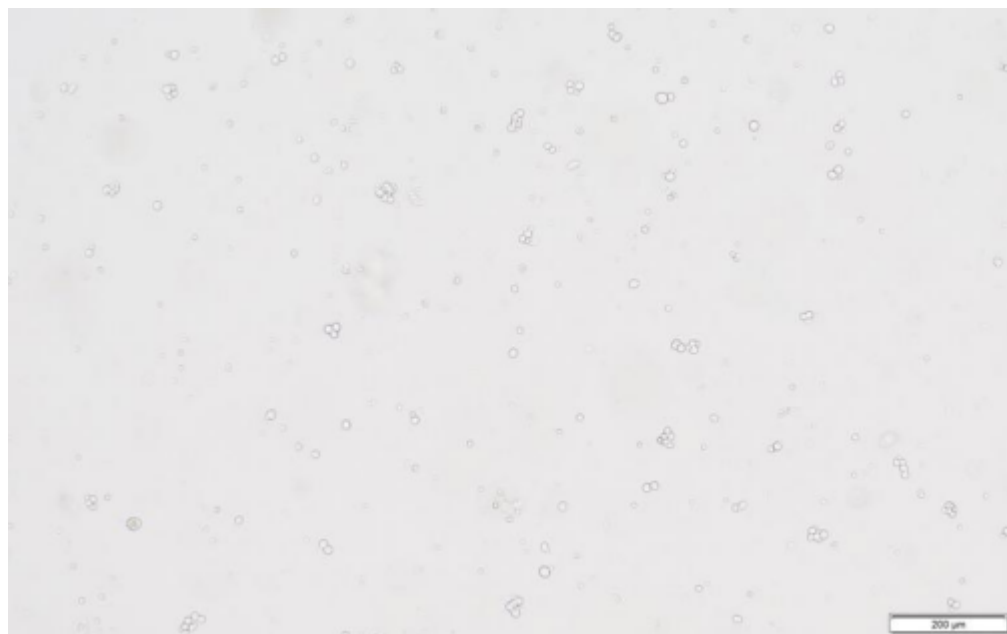


Figure 1. Morphology of A20 cell line

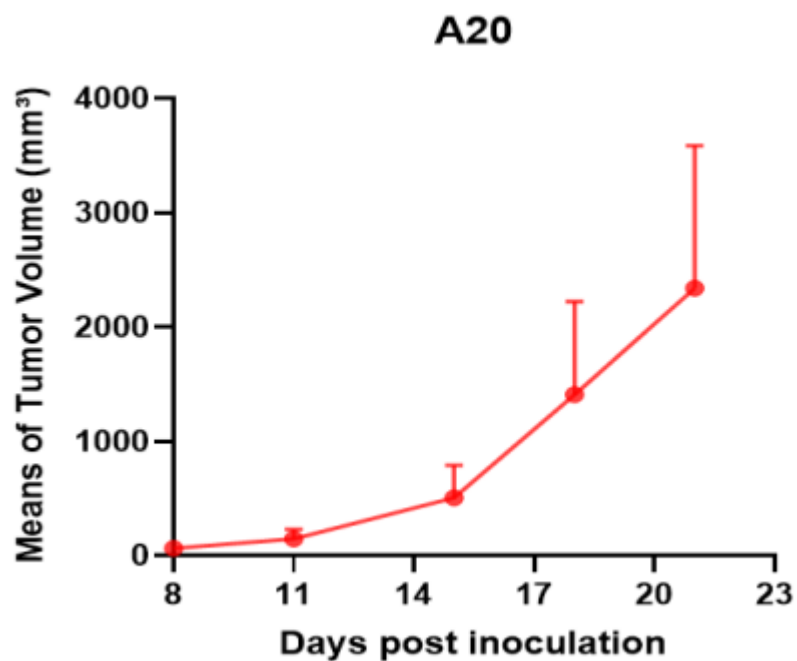


Figure 2. Tumor growth curve of A20 allogeneic model (n=5)

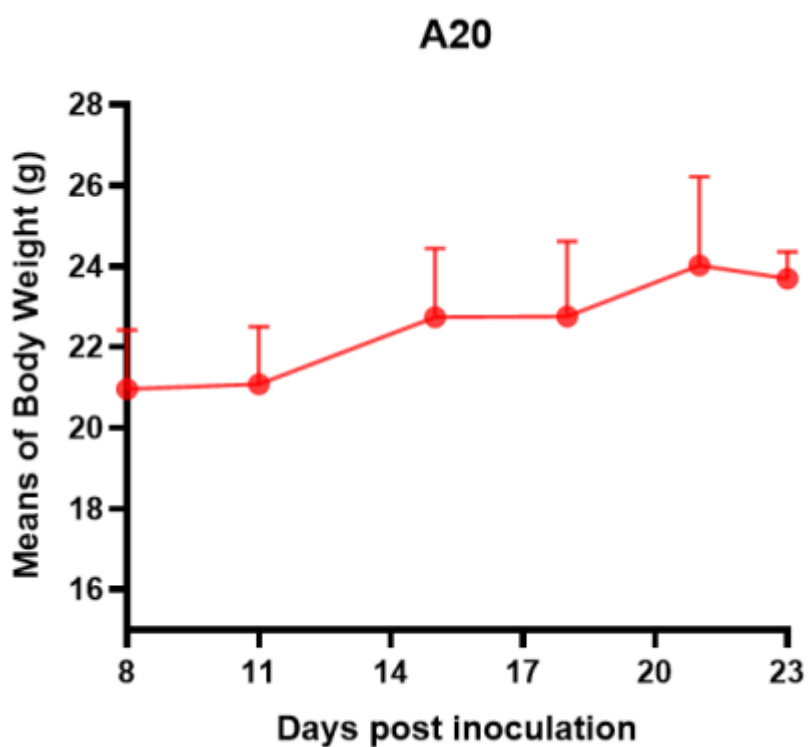


Figure 3. Body weight change of A20 allogeneic model (n=5)

野生型细胞株不进行出售服务，仅作为荷瘤鼠和体内药效进行服务。