

Hepa1-6-hPD-L1

品系基本信息

目录号	NM-GA02-TM01
细胞系名称	Hepa1-6- <i>Cd274</i> ^{em1(hPD-L1)Smoc}
品系状态	构建中
品系描述	PDL1基因人源化的Hepa1-6细胞系 *使用本品系发表的文献需注明: Hepa1-6-hPD-L1 cell line (Cat. NO. NM-GA02-TM01) was purchased from Shanghai Model Organisms Center, Inc..

验证数据

1. *In vitro* Expression of Hepa1-6-hPDL1 cell line

The hPDL1 protein expression in the Hepa1-6-hPDL1 cells were measured by Flow Cytometry. FACS data showed that significant human PDL1 expression in the Hepa1-6-hPDL1 cell line.

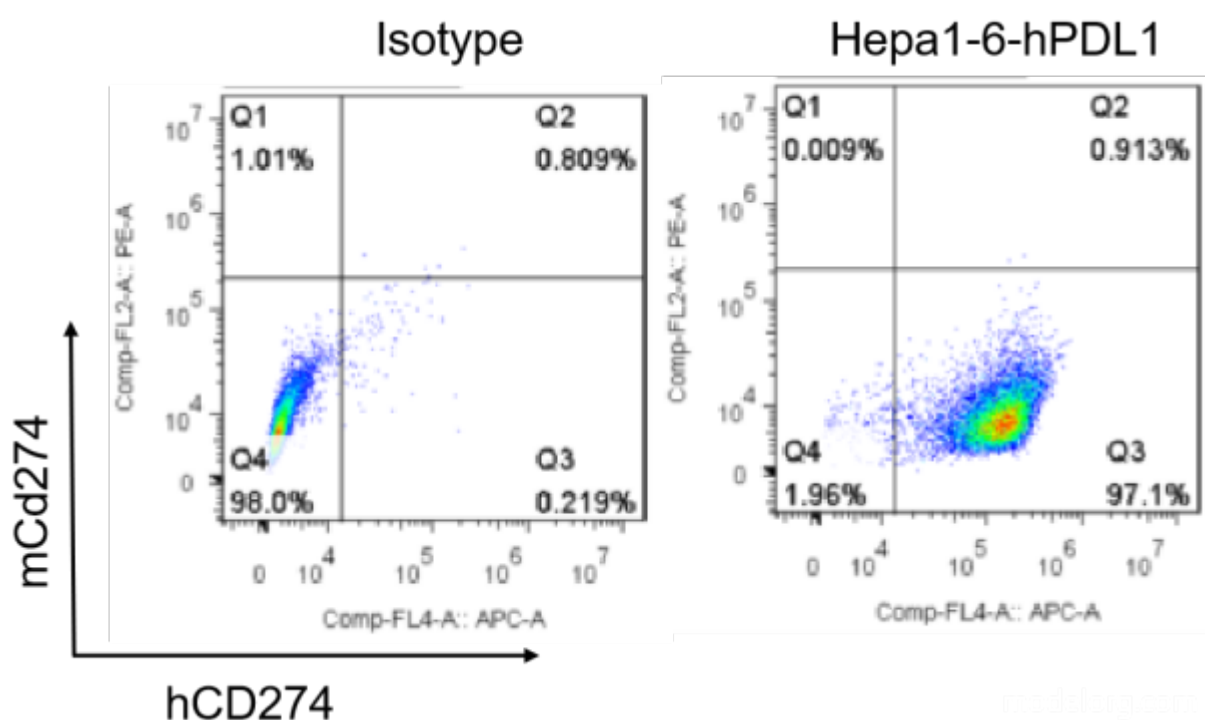


Figure 1. hPDL1 expression in Hepa1-6-hPDL1 cell line

2. Characterization of in vivo growth kinetics

To test the take rates, and the tumor growth characteristics of Hepa1-6-hPDL1 cell line, cells were subcutaneously inoculated into the C57BL/6 mice. The tumor growth curve was shown in the Fig 2.

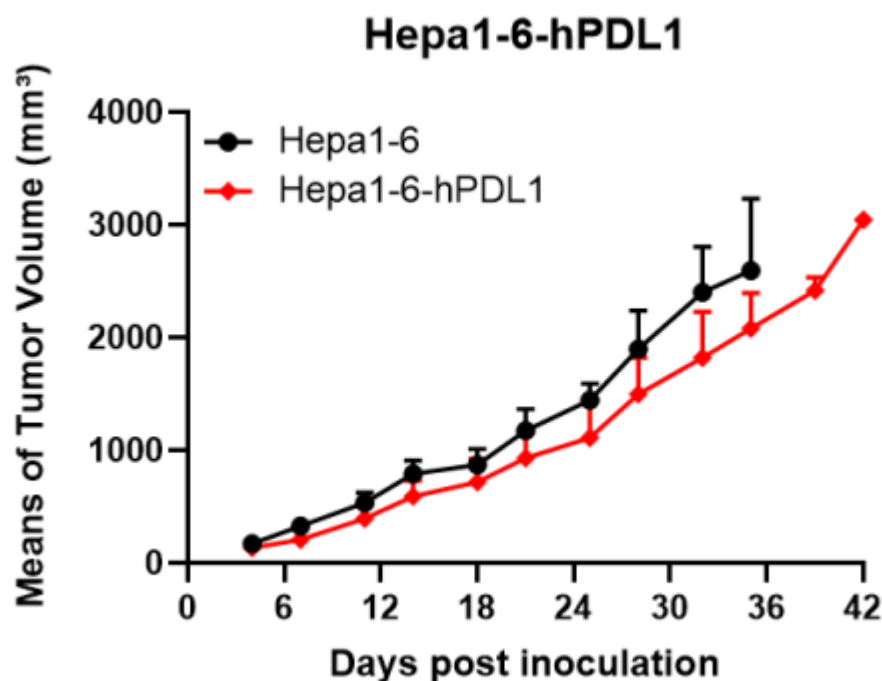


Figure 2. Tumor growth curve of Hepa1-6-hPDL1 syngeneic model (n=4)

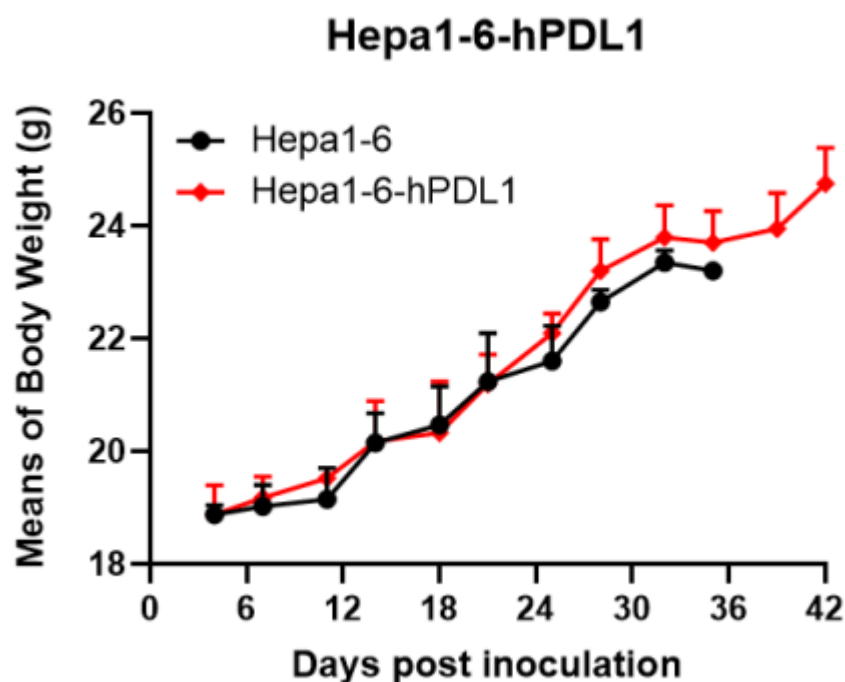


Figure 3. Body weight change of Hepa1-6-hPDL1 syngeneic model (n=4)

3. Expression of hPDL1 protein in tumors

To verify the hPDL1 protein expression, the tumors were dissected and separated for single cell suspension. Human PDL1 protein expression can be detected in the humanized modified tumors.

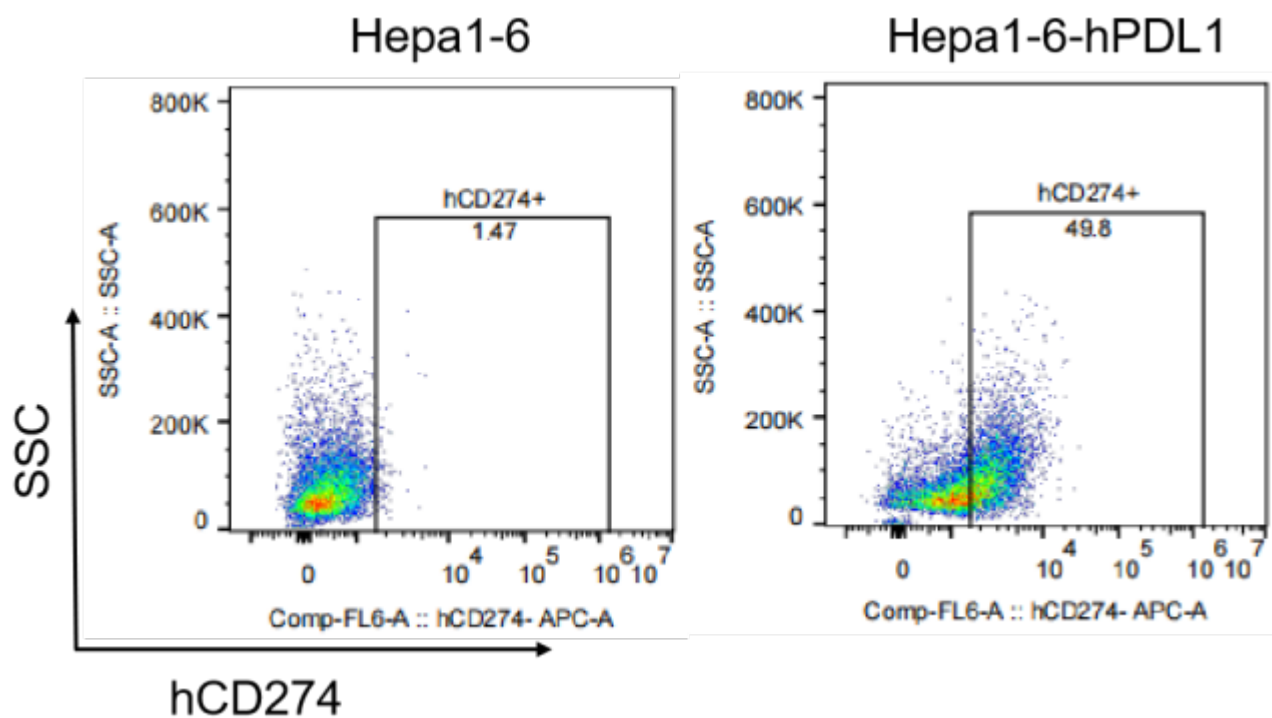


Figure 4. The expression of hPDL1 in humanized modified tumors by FACS