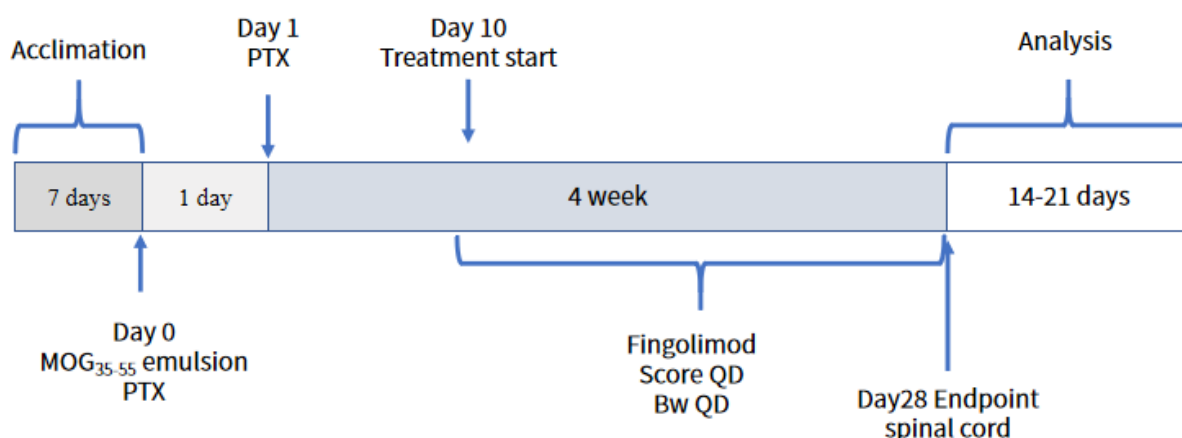


# 实验性自身免疫性脑脊髓炎 (EAE) 小鼠模型

## 诱导方法

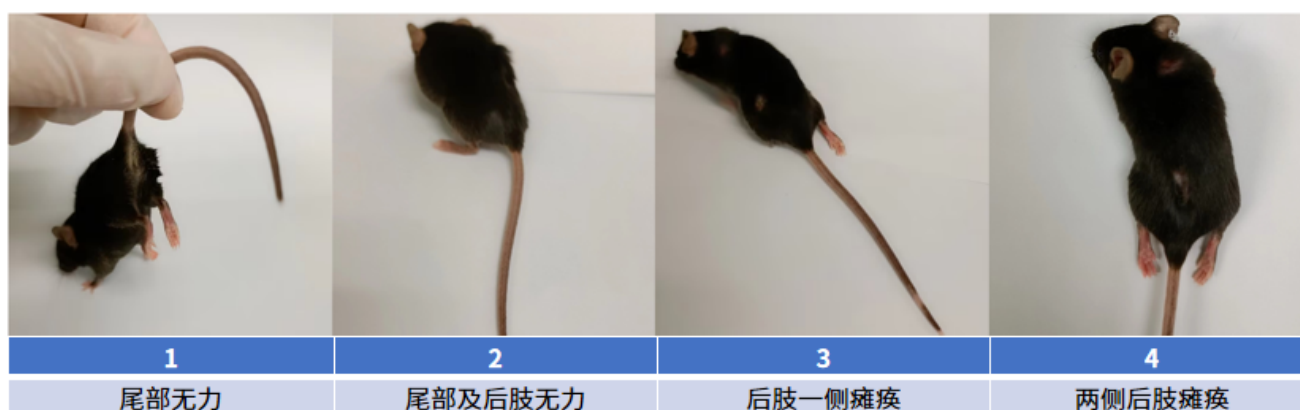
髓鞘少突胶质细胞糖蛋白(MOG<sub>35-55</sub>)和完全弗氏佐剂(CFA)免疫诱导6-8周龄健康雌性小鼠，诱导当天为第0天。(PTX: 百日咳毒素)



## 验证数据

### Clinical score

Score	Clinical observations
0	No anomalies
1	Tail weakness
2	Tail weakness and limb weakness
3	Mild paralysis of the limbs
4	severe paralysis of the limbs, cannot be recovered after being turned over
5	dying



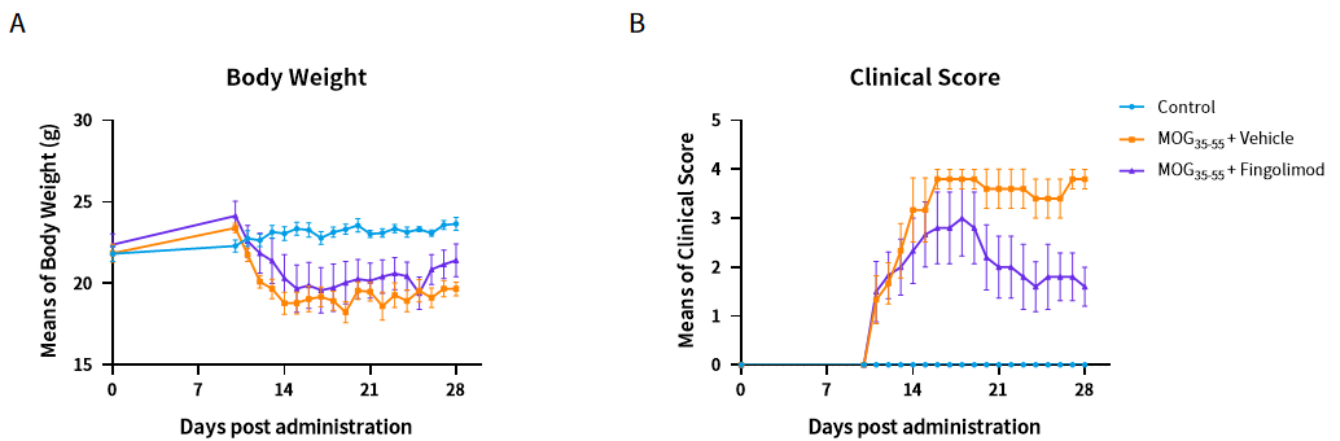


Figure 1: MOG<sub>35-55</sub> induced EAE model in C57BL/6 (A) body weight (B) clinical score (n=5).

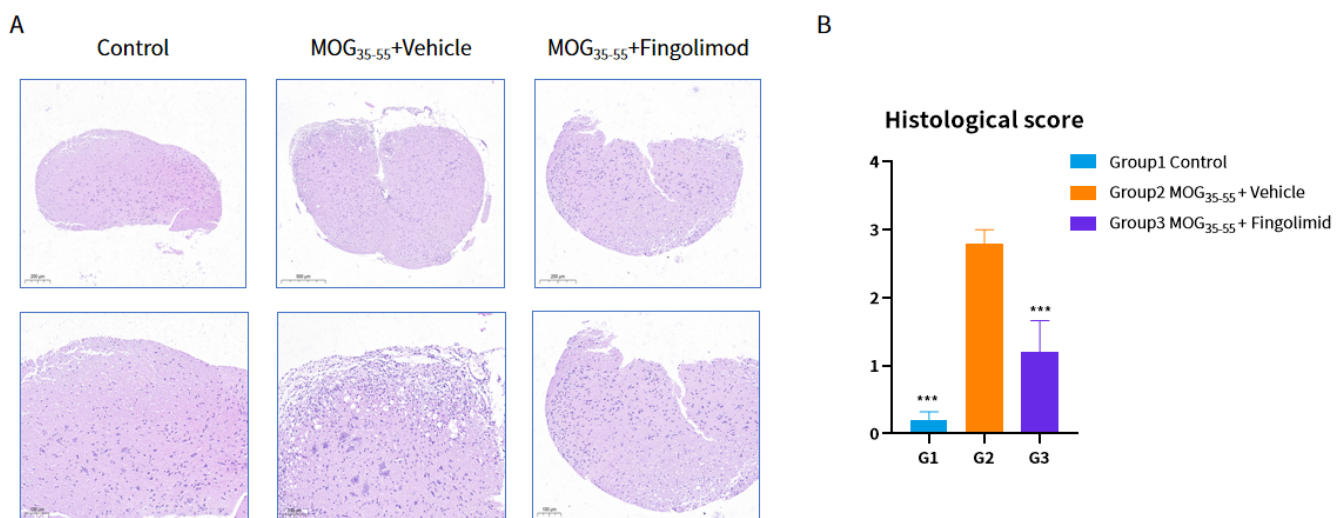


Figure 2: MOG<sub>35-55</sub> induced EAE model in C57BL/6 (A) typical pathology image (B) histological score (n=5), \*\*\*P < 0.001 vs G2.

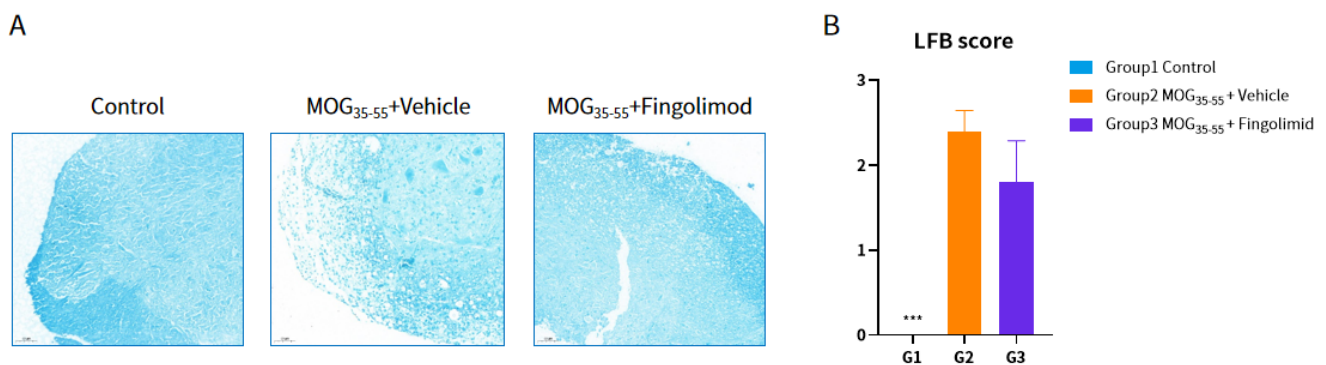


Figure 3: MOG<sub>35-55</sub> induced EAE model in C57BL/6 (A) LFB demyelination pathology image (B) LFB score (n=5), \*\*\* P < 0.001 vs G2.

