

# Calca-Cre

将iCre-2A插入到小鼠Calca基因起始密码子处。

品系全名	C57BL/6Smoc- <i>Calca</i> <sup>em1(iCre-2A)Smoc</sup>
目录号	NM-KI-200302
品系状态	胚胎冻存

## 基因信息

基因名 Calca	基因曾用名	CA; Ct; Ctn; Calc; Cgrp; CGRP1; Calc1; CGRP-1
	染色体位置	7
	NCBI ID	<a href="#">12310</a>
	MGI ID	<a href="#">2151253</a>
	Ensembl ID	<a href="#">ENSMUSG00000030669</a>
	人类同源基因	CALCA

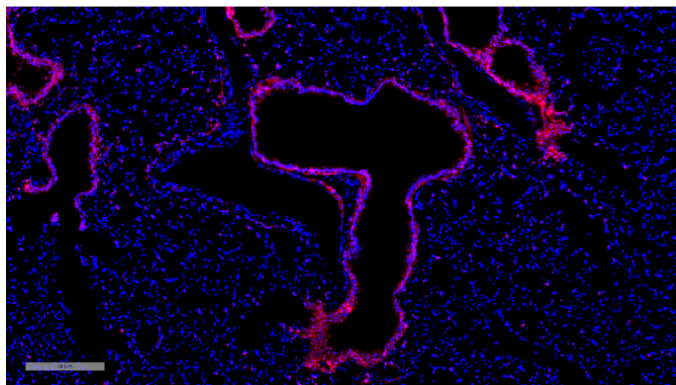
## 品系描述

将iCre-2A插入到小鼠Calca基因起始密码子处。

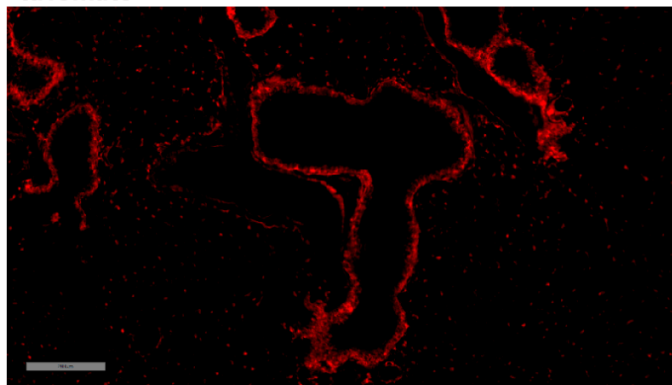
\*使用本品系发表的文献需注明: Calca-Cre mice (Cat. NO. NM-KI-200302) were purchased from Shanghai Model Organisms Center, Inc..

## 验证数据

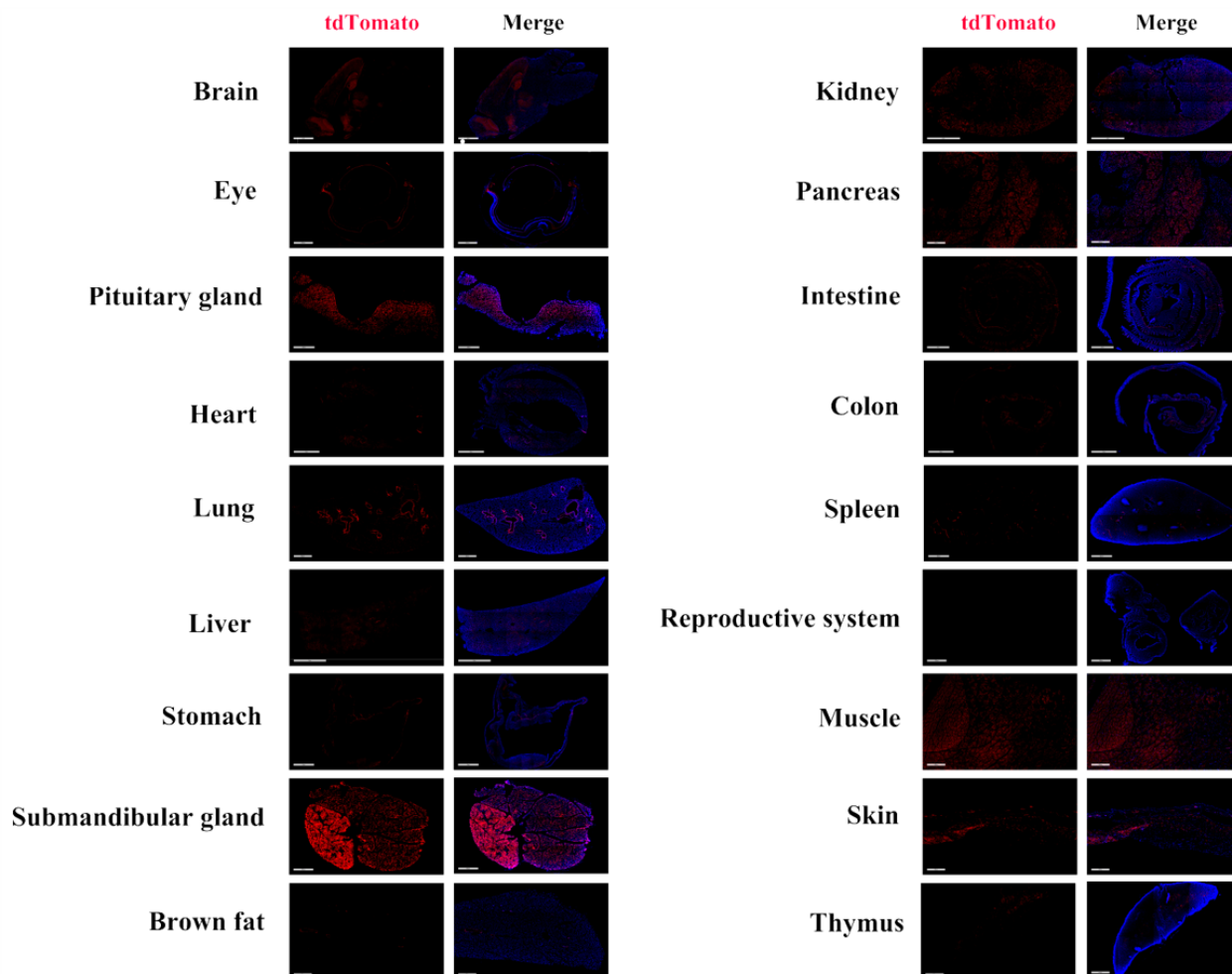
tdTomato;DAPI



tdTomato



**Fig1. Cre mediated recombination in lung of *Calca<sup>Cre/+</sup>; Rosa26<sup>tdTomato/+</sup>* mouse.**



**Fig2. Detection of tdTomato(red) in various tissues of *Calca<sup>Cre/+</sup>; Rosa26<sup>tdTomato/+</sup>* mouse.**

Expression tissues include: brain, retina, pituitary gland, heart, lung, liver, stomach, salivary gland, kidney, pancreas, small intestine, large intestine, spleen, muscle, skin and thymus; A few cells expressed in Brown fat; Tissues that unexpressed include uterus. (6-weeks old, female) (For more detailed information please contact our technical advisor.)

## 发表文献

[Cathepsin K-Positive Cell Lineage Promotes In Situ Dentin Formation Controlled by Nociceptive Sonic Hedgehog](#)

来源杂志: Advanced Science