

Nervous System

The model of nerve injury induced by surgery or drugs can be used to study the mechanism of nerve injury and to evaluate drug efficacy.

- [Mouse model of low back pain](#)
- [Mouse model of Parkinson's disease](#)

Principle The sciatic nerve of mice is partially ligated to simulate low back pain observed in human.

Sample requirements Male C57 mice of 8 weeks old

Testing instrument Dynamic Plantar Aesthesiometer (Von Frey, Ugo Basile)

Service cycle 14 business days

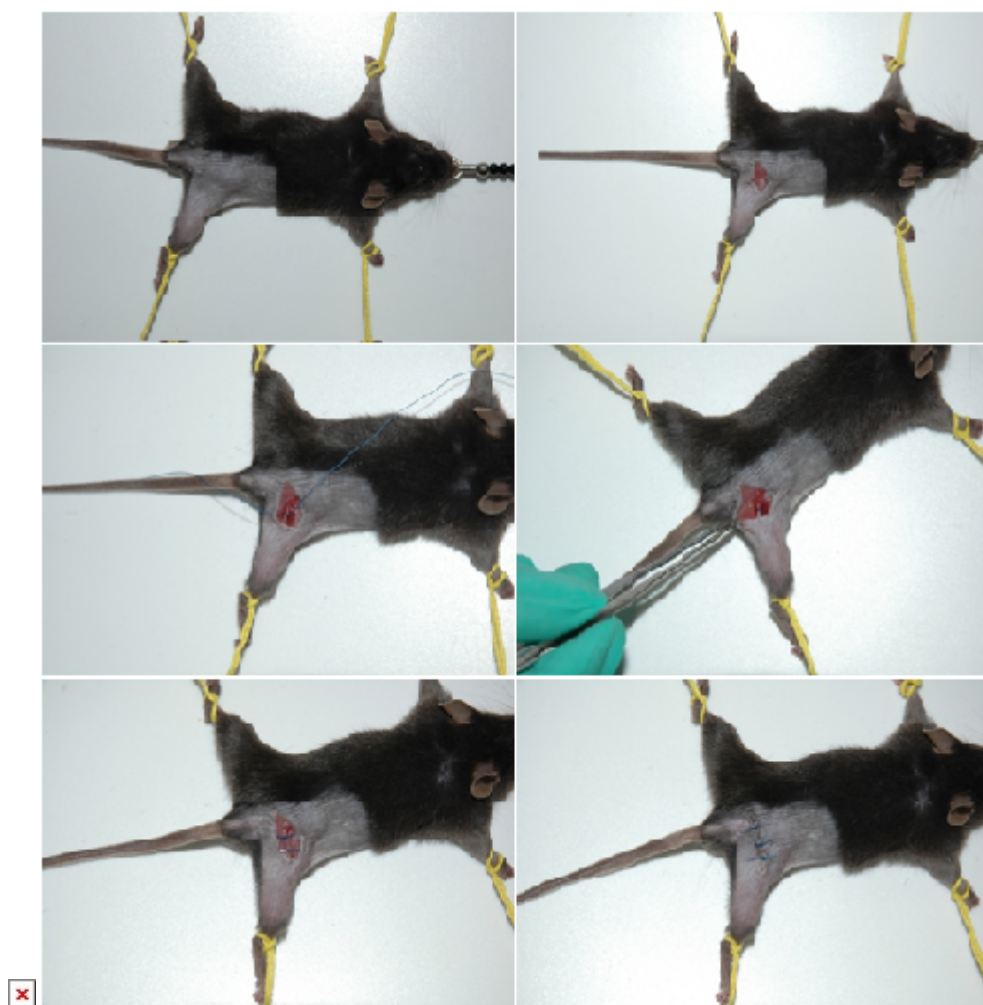


Figure 1 Modeling method

Principle The drug MPTP can disrupt the dopamine pathway between the mouse striatum and the substantia nigra to mimic human Parkinson's disease.

Sample requirements Male C57 mice of 10 weeks old

Testing instruments and consumables Rotating-beam fatigue-testing machine, climbing poles, MPTP (SIGMA)

Service cycle 14 business days

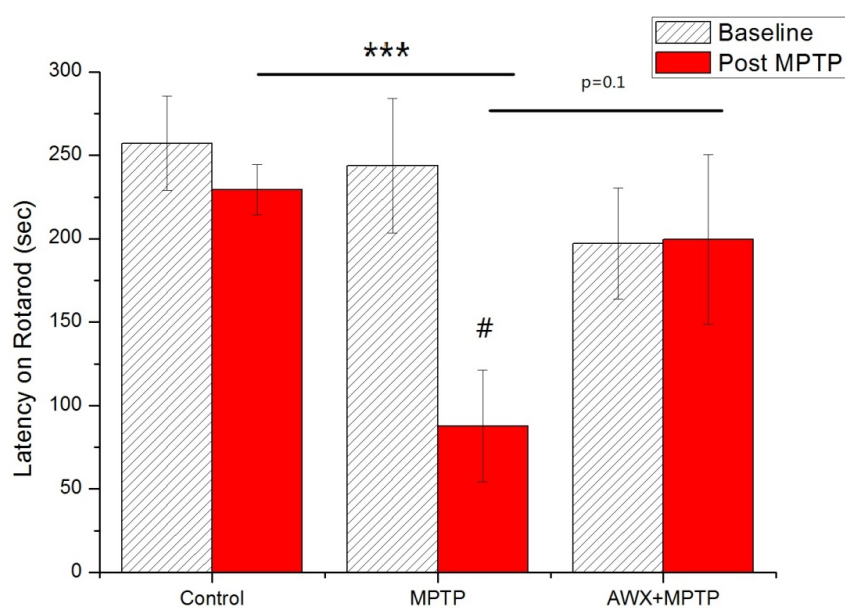


图1 MPTP Latency on Rotarod (sec)